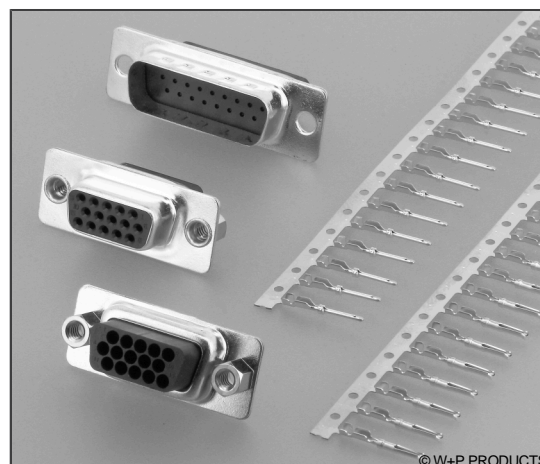


Technische Daten / Technical Data

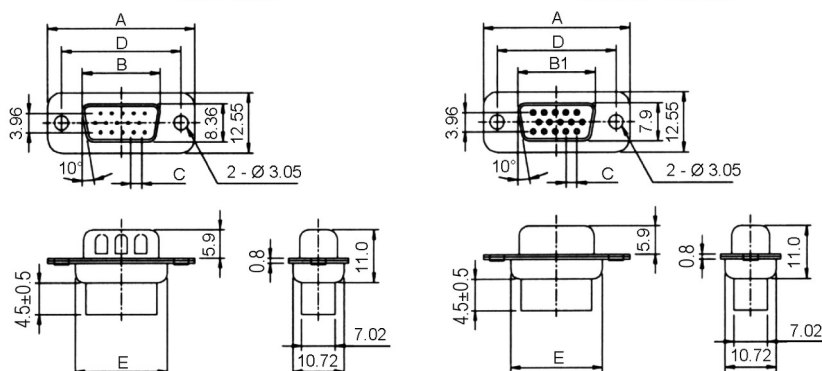
Gehäuse <i>Shell</i>	Stahl vernickelt, verzinkt <i>Steel, nickel plated, tin plated</i>
Isolierkörper <i>Insulator</i>	Thermoplast, nach UL94 V-0 <i>Thermoplastic, rated UL94 V-0</i>
Kontaktmaterial <i>Contact Material</i>	Kupferlegierung <i>Copper alloy</i>
Kontaktoberfläche <i>Contact Surface</i>	Gold über Nickel <i>Gold over nickel</i>
Durchgangswiderstand <i>Contact Resistance</i>	< 20 mΩ <i>< 20 mΩ</i>
Isolationswiderstand <i>Insulation Resistance</i>	> 500 MΩ <i>> 500 MΩ</i>
Spannungsfestigkeit <i>Test Voltage</i>	500 V AC <i>500 V AC</i>
Nennstrom <i>Current Rating</i>	3 A <i>3 A</i>
Temperaturbereich <i>Temperature Range</i>	-55 °C ... +125 °C <i>-55 °C ... +125 °C</i>
Güteklasse <i>Quality Class</i>	GK 3, min. 50 Steckzyklen, andere GK auf Anfrage <i>Quality class 3, min. 50 cycles, more quality options on request</i>



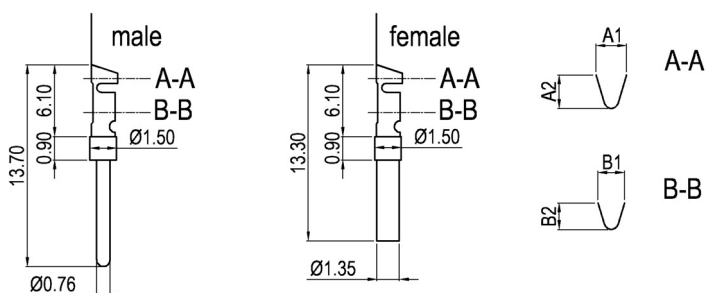
© W+P PRODUCTS

Stift / Male

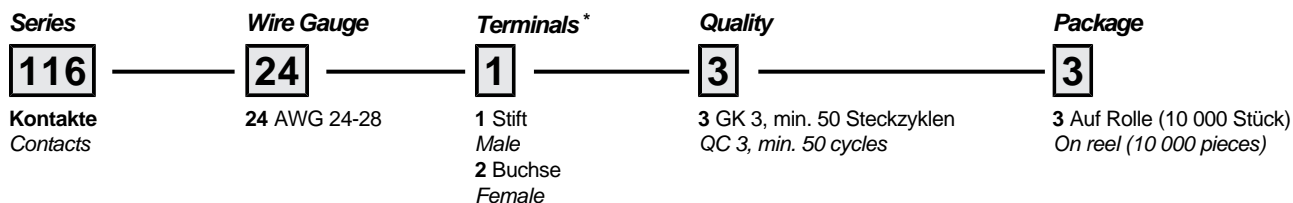
Buchse / Female



n	A	B	B1	C	D	E
15	30.80	16.92	16.33	2.29	24.99	19.28
26	39.10	25.50	24.66	2.29	33.32	27.51
44	53.00	38.96	38.38	2.29	47.04	41.10
62	69.30	55.42	54.84	2.41	63.50	57.30



A1±0.10	A2±0.10	B1±0.10	B2±0.10
1.78	1.65	1.32	1.53



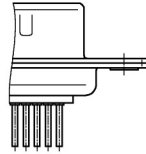
* Dies ist ein **Bestellbeispiel** - bitte durch Ihre Spezifikationen ersetzen.
* This is an **order example** - please replace by your specifications.

D-Sub Befestigungsoptionen

Mounting Options

Durchgangsloch / Through Hole

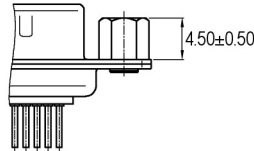
0 Durchgangsloch 3,05mm
3.05mm Through Hole



Gewindeniet vorn / Thread Rivet Front

B1 Gewindeniet UNC 4-40 (Anzugdrehmoment 0,4 Nm max.)
UNC 4-40 Thread Rivet (Tightening Torque 0.4 Nm max.)

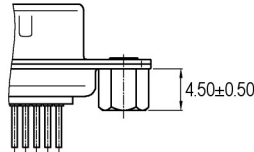
B2 Gewindeniet M3 (Anzugdrehmoment 0,3 Nm max.)
M3 Thread Rivet (Tightening Torque 0.3 Nm max.)



Gewindeniet hinten / Thread Rivet Back

1 Gewindeniet UNC 4-40 (Anzugdrehmoment 0,4 Nm max.)
UNC 4-40 Thread Rivet (Tightening Torque 0.4 Nm max.)

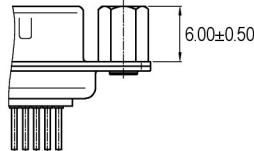
2 Gewindeniet M3 (Anzugdrehmoment 0,3 Nm max.)
M3 Thread Rivet (Tightening Torque 0.3 Nm max.)



Gewindebolzen vorn / Thread Bolt Front

3 Gewindebolzen UNC 4-40 (Anzugdrehmoment 0,4 Nm max.)
UNC 4-40 Thread Bolt (Tightening Torque 0.4 Nm max.)

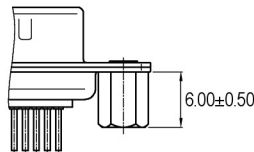
4 Gewindebolzen M3 (Anzugdrehmoment 0,3 Nm max.)
M3 Thread Bolt (Tightening Torque 0.3 Nm max.)



Gewindebolzen hinten / Thread Bolt Back

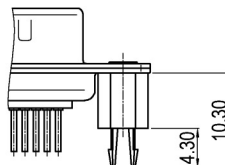
5 Gewindebolzen UNC 4-40 (Anzugdrehmoment 0,4 Nm max.)
UNC 4-40 Thread Bolt (Tightening Torque 0.4 Nm max.)

6 Gewindebolzen M3 (Anzugdrehmoment 0,3 Nm max.)
M3 Thread Bolt (Tightening Torque 0.3 Nm max.)



Board Locks

BL Board Lock mit UNC 4-40 Gewinde (Anzugdrehmoment 0,4 Nm max.)
Board Lock with UNC 4-40 Thread (Tightening Torque 0.4 Nm max.)



Combi-Locks

CL Combi-Lock mit UNC 4-40 Gewinde (Anzugdrehmoment 0,4 Nm max.)
Combi Lock with UNC 4-40 Thread (Tightening Torque 0.4 Nm max.)

