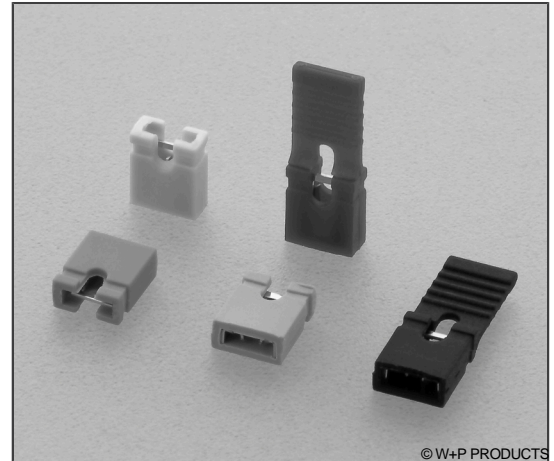


Kurzschlussbrücken RM 2,54mm, für 0,635mm Vierkantstifte Mini Jumpers, 2.54mm Pitch, for 0.635mm Square Pins

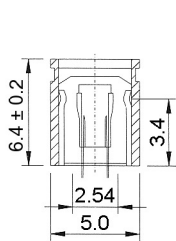
Technische Daten / Technical Data

Isolierkörper <i>Insulator</i>	Thermoplast, nach UL94 V-0 <i>Thermoplastic, rated UL94 V-0</i>
Kontaktmaterial <i>Contact Material</i>	Kupferlegierung <i>Copper Alloy</i>
Kontaktoberfläche <i>Contact Surface</i>	Gold über Nickel <i>Gold over nickel</i>
Durchgangswiderstand <i>Contact Resistance</i>	< 30 mΩ
Isolationswiderstand <i>Insulation Resistance</i>	> 1000 MΩ
Spannungsfestigkeit <i>Test Voltage</i>	500 V AC
Nennstrom <i>Current Rating</i>	3 A
Temperaturbereich <i>Temperature Range</i>	-55 °C ... +85 °C

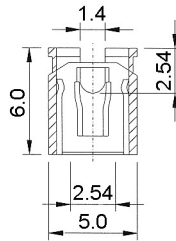
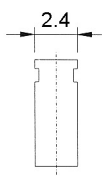


© W+P PRODUCTS

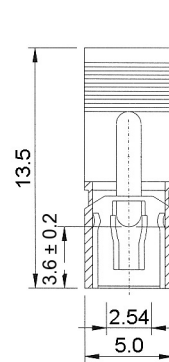
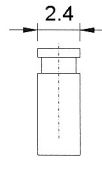
Einsetzbar für Vierkantstifte 0,635mm.
Accept rectangular pins 0.635mm.



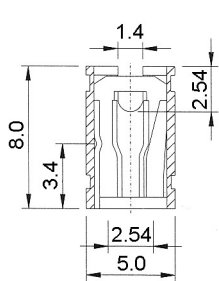
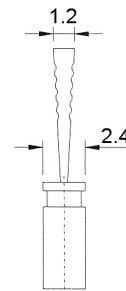
Type 101



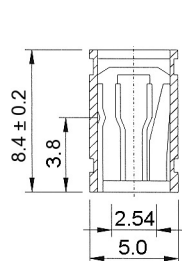
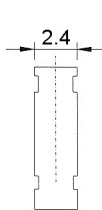
Type 201



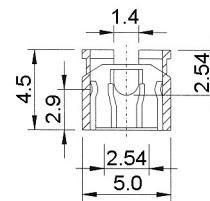
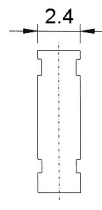
Type 301



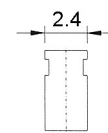
Type 401



Type 501



Type 601



Series

165

Type*

101

- 101 Geschlossen
Closed
- 201 Offen
Open
- 301 Offen mit Lasche
Open with latch
- 401 Offen
Open
- 501 Geschlossen
Closed
- 601 Offen
Open

Colour*

10

- 10 Schwarz
Black
- 20 Rot
Red
- 30 Blau
Blue
- 40 Grün
Green
- 50 Gelb
Yellow
- 60 Grau
Grey

Plating

00

- 00 Kontaktbereich vergoldet
Gold plated contact area

Farboptionen für Serien 101 und 201.
Colour options for series 101, 201 only.

* Dies ist ein **Bestellbeispiel** -
bitte durch Ihre Spezifikationen ersetzen.
* This is an **order example** -
please replace by your specifications.