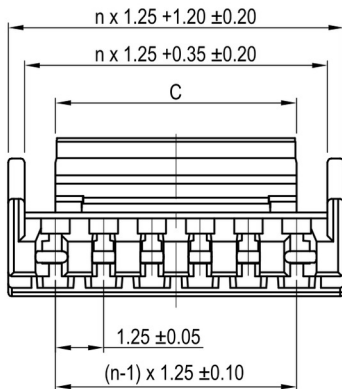
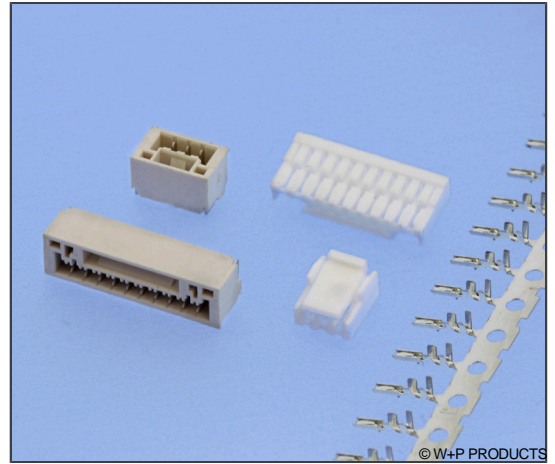


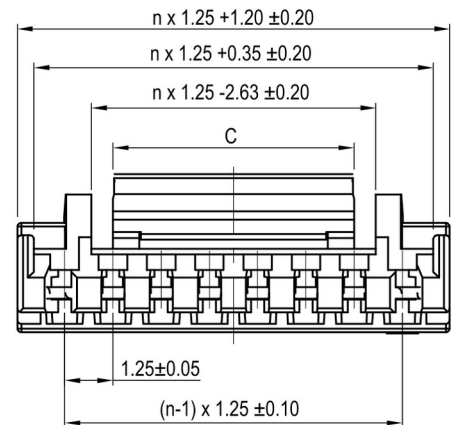
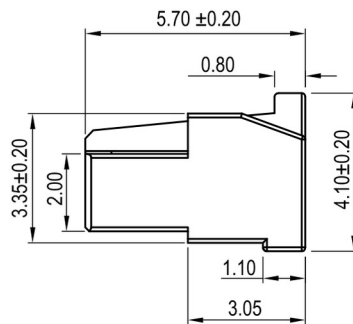
SMT-Crimp-Rast-Stift-/Buchsenleisten RM 1,25mm – mit Verriegelung SMT Friction Lock Headers / Crimp Housings, 1.25mm Pitch – with Lock

Technische Daten / Technical Data

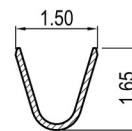
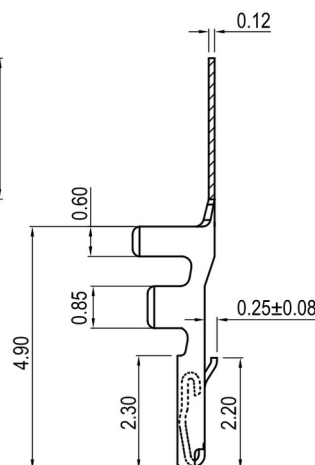
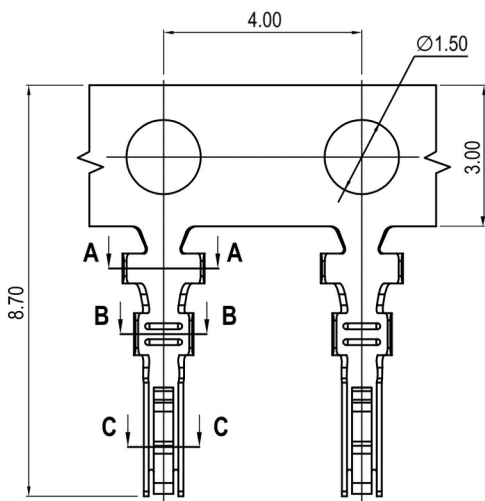
Isolierkörper <i>Insulator</i>	Thermoplast, nach UL94 V-0 <i>Thermoplastic, rated UL94 V-0</i>
Farbe <i>Colour</i>	Gehäuse: Weiß, Wann: Beige <i>Housings: White, box headers: Beige</i>
Kontaktmaterial <i>Contact Material</i>	Kupferlegierung <i>Copper alloy</i>
Aderquerschnitt <i>Applicable wire Gauge</i>	AWG 30 ~ 26 <i>AWG 30 ~ 26</i>
Durchgangswiderstand <i>Contact Resistance</i>	< 30 mΩ <i>< 30 mΩ</i>
Isolationswiderstand <i>Insulation Resistance</i>	> 100 MΩ <i>> 100 MΩ</i>
Spannungsfestigkeit <i>Test Voltage</i>	500 V AC <i>500 V AC</i>
Nennspannung <i>Voltage Rating</i>	50 V AC/DC <i>50 V AC/DC</i>
Nennstrom <i>Current Rating</i>	1 A <i>1 A</i>
Temperaturbereich <i>Temperature Range</i>	-25 °C ... +85 °C <i>-25 °C ... +85 °C</i>
Verarbeitung <i>Processing</i>	260 °C für 10s max. <i>260 °C for 10s max.</i>



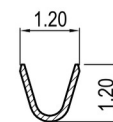
02-07 Contacts



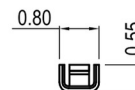
08-15 Contacts



A-A



B-B



C-C

n	C
02	1.95
03	3.20
04/05	4.20
06-09	6.25
10-15	8.15

Series

5650

Contacts*

01

02-15 Für Buchsengehäuse
For housings
01 Für Buchsenkontakte
For crimp terminals

Type*

2

1 Gehäuse für Buchsenkontakte
Housing for female terminals
2 Buchsenkontakte
Female crimp terminals

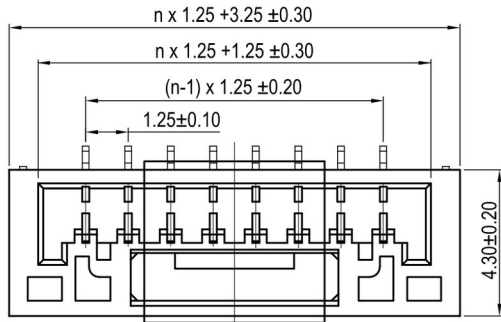
Plating*

50

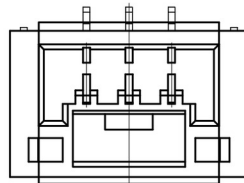
50 Sn (bei Gehäusen nicht erforderlich)
Sn (for housings not needed)

5650

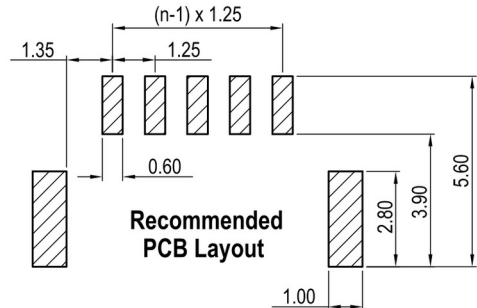
SMT-Crimp-Rast-Stift-/Buchsenleisten RM 1,25mm – mit Verriegelung
SMT Friction Lock Headers / Crimp Housings, 1.25mm Pitch – with Lock



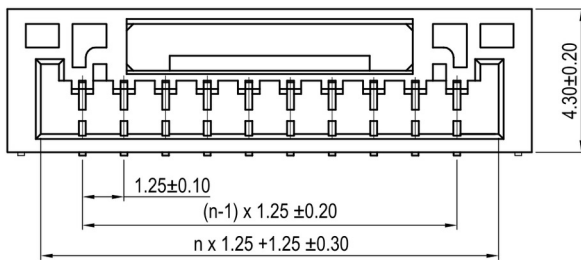
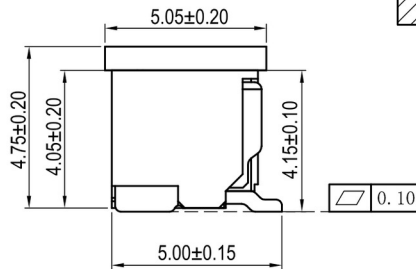
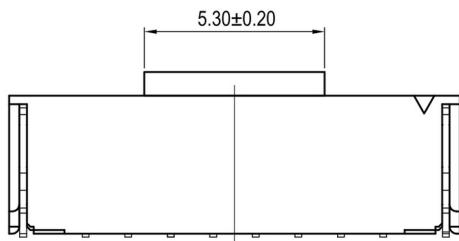
08-15 pins



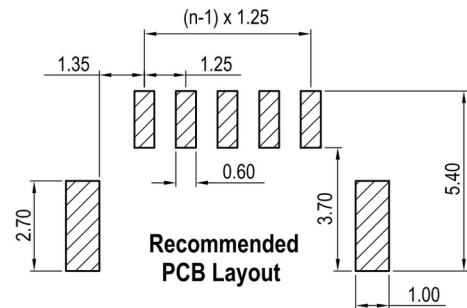
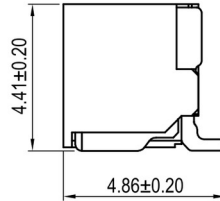
02-07 pins



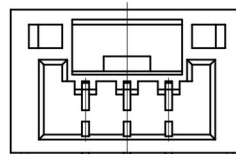
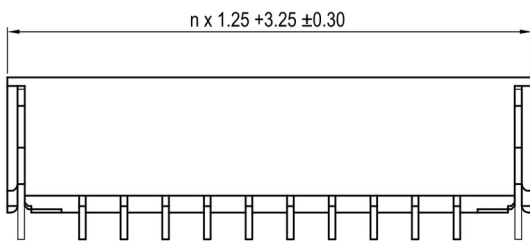
Recommended PCB Layout



08-15 pins



Recommended PCB Layout



02-07 pins

Series

5650

Contacts*

05

02-15

Type*

3

3 Stiftleiste stehend
 Pin header vertical
 4 Stiftleiste liegend
 Pin header horizontal

Plating*

50

50 Sn

Packaging*

PPTR

PPTR
 TR

* Dies ist ein **Bestellbeispiel** - bitte durch Ihre Spezifikationen ersetzen.
 * This is an **order example** - please replace by your specifications.

Lieferformen / Packaging Options:

PPTR Type 3: Tape & Reel mit Pick & Place-Pad / Tape & Reel with Pick & Place-Pad
TR Type 4: Tape & Reel ohne Pick & Place-Pad / Tape & Reel w/o Pick & Place-Pad