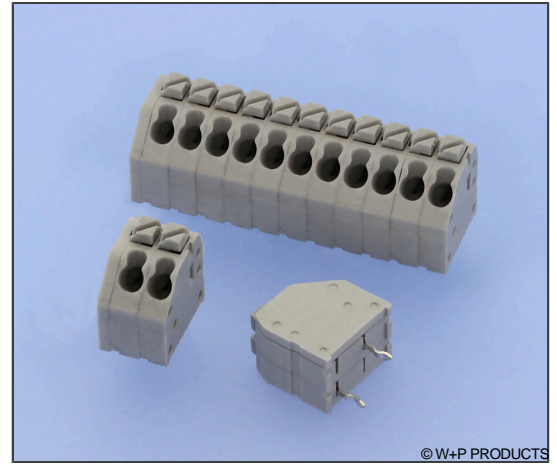


# 822-04-SCA

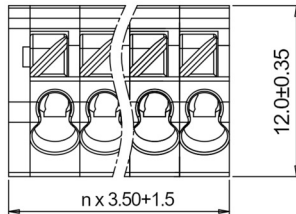
Leiterplattenklemme RM 3,50mm, mit Klemmfeder, anreihbar  
PCB Terminal Blocks 3.50mm Pitch, With Clamp Spring, Stackable

## Technische Daten / Technical Data

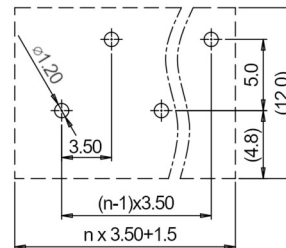
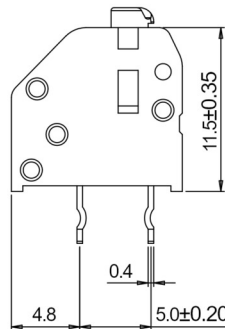
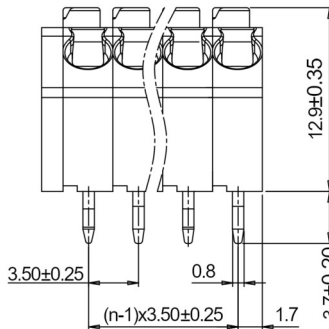
Isolierkörper	Thermoplast, nach UL94 V-0
Insulator	Thermoplastic, rated UL94 V-0
Kontaktmaterial	Messing, verzinkt
Contact Material	Brass, tin plated
Aderquerschnitt	AWG 22 ~ 16
Applicable wire Gauge	AWG 22 ~ 16
Durchgangswiderstand	20 mΩ max.
Contact Resistance	20 mΩ max.
Isolationswiderstand	5000 MΩ min.
Insulation Resistance	5000 MΩ min.
Spannungsfestigkeit	1600 V AC
Test Voltage	1600 V AC
Nennspannung	300 V
Voltage Rating	300 V
Nennstrom	6 A
Current Rating	6 A
Temperaturbereich	-40 °C ... +105 °C
Temperature Range	-40 °C ... +105 °C
Verarbeitung	Wellenlöten
	245°C ± 10°C / 5s
Processing	Wave Soldering
	245°C ± 10°C / 5s



© W+P PRODUCTS



Drahtschutz: Edelstahl  
Wire Guard: Stainless Steel  
Abisolierungslänge Leiter: 8-9mm  
Wire Strip Length: 8-9mm



Recommended P.C.B. Layout

Series

**822-04-SCA**

Pitch

**3.5**

Contacts\*

**06**

02-20

Design

**5**

5 45° gewinkelter Kabeleingang  
45° Right angled cable entry

Colour

**60**

60 Grau  
Grey

\* Dies ist ein **Bestellbeispiel** -  
bitte durch Ihre Spezifikationen ersetzen.  
\* This is an **order example** -  
please replace by your specifications.

wppro.com/serie/XXX  
wppro.com/en/serie/XXX

Design- und technische Änderungen auch ohne vorherige Ankündigung vorbehalten.  
Design and/or technical specifications may change without prior notice.

**W+P**  
WE CONNECT IT

(+49) 5223 98507-0  
sales@wppro.com