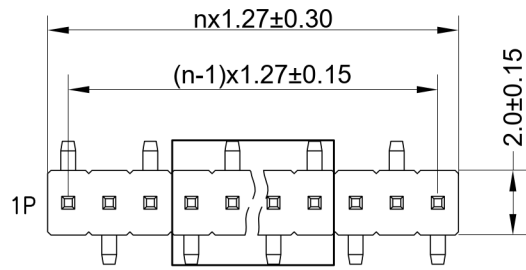
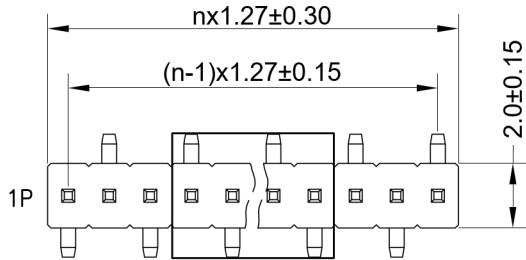


On release of the data sheet, previous releases are no longer valid. Dimensions and tolerances are subject to change.

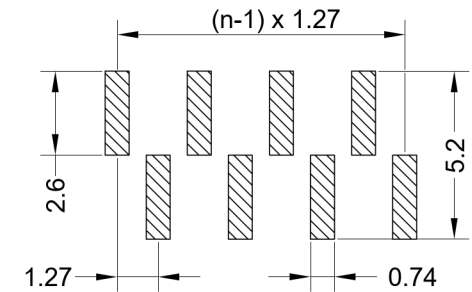
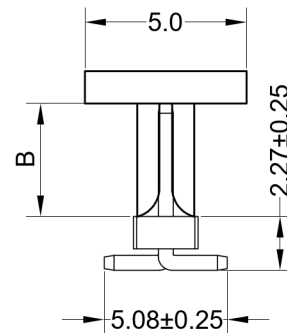
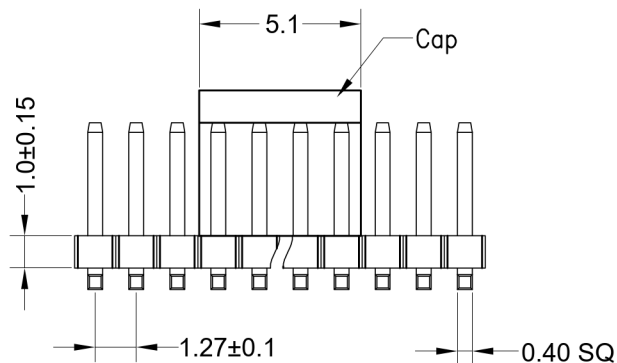
Copying of this document, and giving it to others and the use or communication of the contents thereof, are forbidden without express authority. Offenders are liable to the registration of a utility model or design.



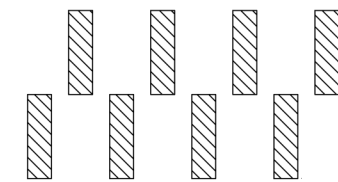
Layout B1



Layout B2



Layout B1



Layout B2

Recommended PCB Layout (Top Side)  
(PCB BOARD TOLERANCE ±0.05)

Series	Contacts *	Layout*	Dimensions*	Plating	Packaging *
<b>46-7140</b>	<b>003</b>	<b>11</b>	<b>10</b>	<b>00</b>	<b>PPST</b>

003 - 040

11 Layout B1  
12 Layout B2

10 B=3.05 mm  
99 Kundenspezifisch  
Customer-specific

00 Vergoldet  
Gold plated

ST In Stangen ohne Pick&Place-Pads / In tubes w/o Pick&Place-Pads  
PPST In Stangen mit P&P-Pads / In tubes with P&P-Pads  
PPTR Tape & Reel mit P&P-Pads / Tape & Reel with P&P-Pads

X.X	± 0.30
X.XX	± 0.20
X.XXX	± 0.10
Angle	± 3°
DIM	TOL



Serial Number <b>46-7140</b>			
Part Name SMT Pin Header, 1.27mm Pitch, Vertical, 1 Row			
Creation date 2023-03-29	Drawn AL	Approved PS	Approval date 2023-03-29
REACH (EG) Nr. 1907/2006 RoHS 2011/65/EU compliant		Scale %	Sheet %