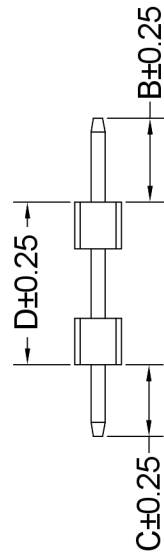
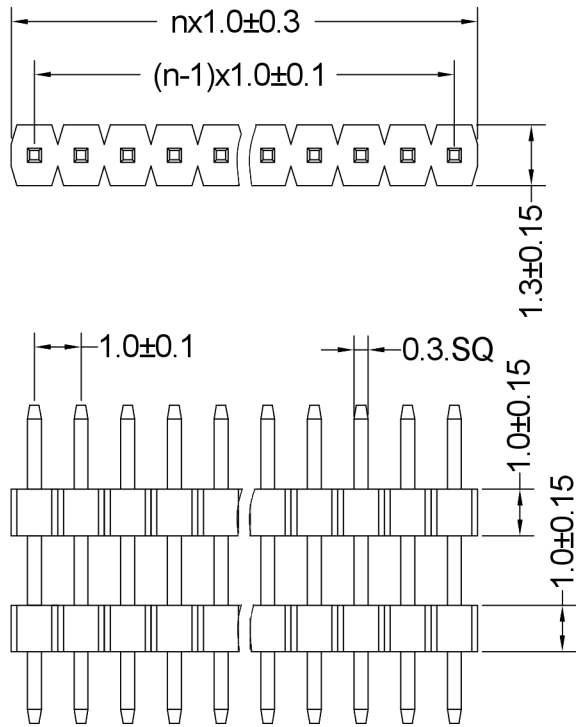
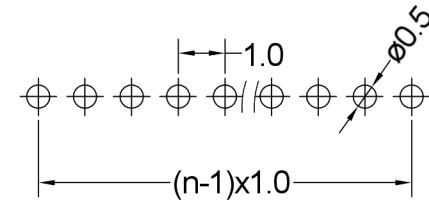


On release of the data sheet, previous releases are no longer valid. Dimensions and tolerances are subject to change.



Insulator	Thermoplastic, rated UL94 V-0
Contact Material	Copper alloy
Contact Surface	Au over Ni
Contact Resistance	30 mΩ max.
Insulation Resistance	500 MΩ min.
Test Voltage	500 V AC/DC
Current Rating	0.75 A
Temperature Range	-40 °C ... +105 °C
Processing Temperature	230 °C for 30-60 seconds (260 °C for 10 seconds)

Recommended P.C.B Layout (Top Side)
(PCB BOARD TOLERANCE ±0.05)



Series	Contacts	Rows	Dimensions	Plating
46-722	010 001-050 Einreihig Single row	1 1 Einreihig Single row	10 10 B=2,00 / C=2,50 / D=6,50 A [mm] Andere Längen auf Anfrage Other lengths on request	00 00 Vergoldet Gold plated

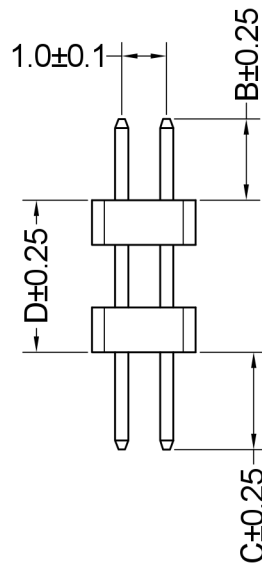
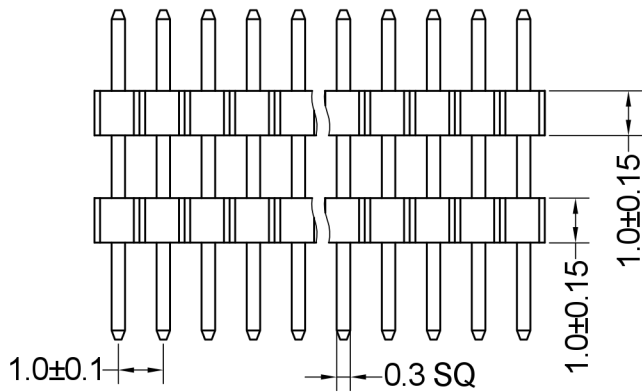
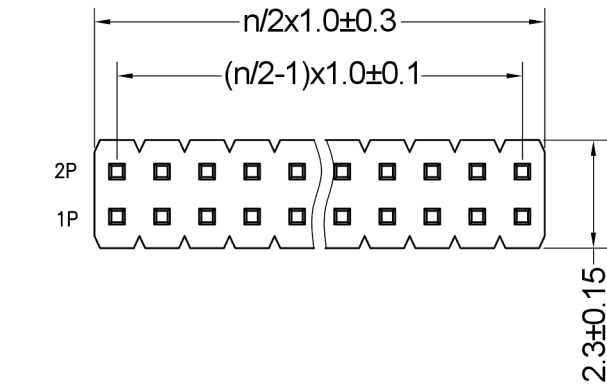
Copying of this document, and giving it to others and the use or communication of the contents thereof, are forbidden without express authority. Offenders are liable to the prosecution of the courts. In the event of the grant of a patent or the registration of a utility model or design.

X.X	±0.30
X.XX	±0.20
X.XXX	±0.10
Angle	±3°
DIM	TOL

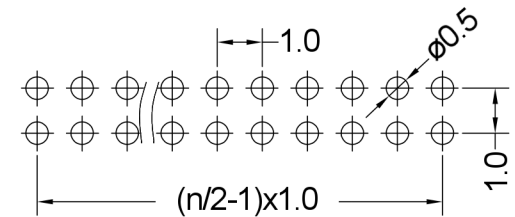


Serial Number 46-722			
Part Name Dual Body Pin Header, 1.00mm Pitch, Single Row			
Creation date 2020-08-10	Drawn AL	Approved PS	Approval date 2020-08-10
REACH (EG) Nr. 1907/2006 RoHS 2011/65/EU compliant		Scale %	Sheet 1/2

On release of the data sheet, previous releases are no longer valid. Dimensions and tolerances are subject to change.



Recommended P.C.B Layout (Top Side)
(PCB BOARD TOLERANCE ±0.05)



Insulator	Thermoplastic, rated UL94 V-0
Contact Material	Copper alloy
Contact Surface	Au over Ni
Contact Resistance	30 mΩ max.
Insulation Resistance	500 MΩ min.
Test Voltage	500 V AC/DC
Current Rating	0.75 A
Temperature Range	-40 °C ... +105 °C
Processing Temperature	230 °C for 30-60 seconds (260 °C for 10 seconds)

Series	Contacts	Rows	Dimensions	Plating
46-722	020 004-050 Zweireihig Double row	2 2 Zweireihig Double row	10 10 B=2,00 / C=2,50 / D=6,50 A [mm] Andere Längen auf Anfrage Other lengths on request	00 00 Vergoldet Gold plated

X.X	±0.30
X.XX	±0.20
X.XXX	±0.10
Angle	±3°
DIM	TOL



Serial Number 46-722			
Part Name Dual Body Pin Header, 1.00mm Pitch, Double Row			
Creation date 2020-08-10	Drawn AL	Approved PS	Approval date 2020-08-10
REACH (EG) Nr. 1907/2006 RoHS 2011/65/EU compliant		Scale %	Sheet 2/2

Copying of this document, and giving it to others and the use or communication of the contents thereof, are forbidden without express authority. Offenders are liable to the registration of a utility model or design.