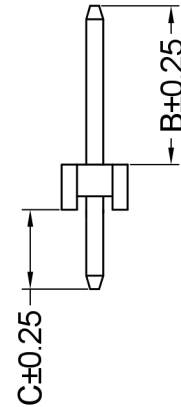
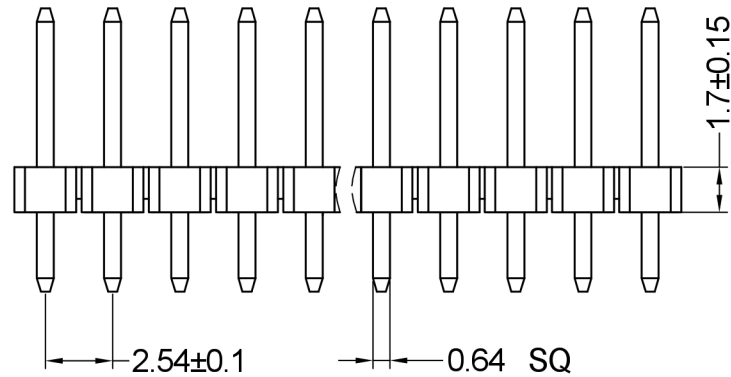
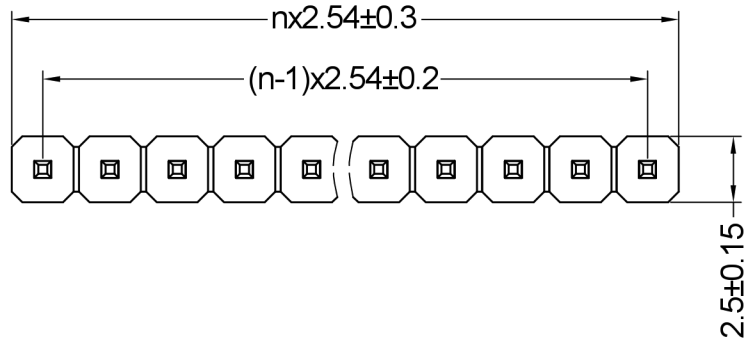
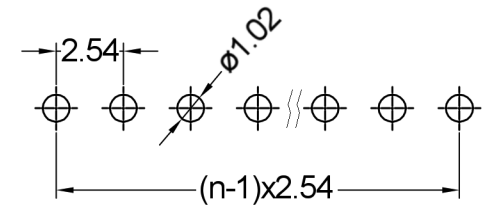


Insulator	Thermoplastic, rated UL94 V-0
Contact Material	Copper alloy
Contact Surface	Au over Ni
Contact Resistance	20 mΩ max.
Insulation Resistance	1000 MΩ min.
Test Voltage	1000 V AC/DC
Current Rating	3 A
Temperature Range	-40 °C ... +105 °C
Processing Temperature	230 °C for 30-60 seconds (260 °C for 5 seconds)



Recommended P.C.B Layout (Top Side)
(PCB BOARD TOLERANCE ±0.05)



Series	Dimensions *	Contacts *	Plating
46-931	11	002	00
	10 A=10,20 B=6,00 C=2,50mm	001-040 Einreihig	00 Vergoldet
	11 A=10,80 B=6,60 C=2,50mm	Single row	Gold plated
	12 A=11,30 B=6,30 C=3,30mm		
	13 A=12,60 B=7,60 C=3,30mm		
	14 A=13,90 B=8,90 C=3,30mm		
	15 A=14,70 B=9,70 C=3,30mm		
	16 A=17,70 B=12,70 C=3,30mm		
	17 A=19,80 B=14,80 C=3,30mm		
	18 A=21,60 B=16,60 C=3,30mm		
	19 A=22,80 B=17,80 C=3,30mm		
	20 A=24,90 B=19,90 C=3,30mm		

X.X	±0.30
X.XX	±0.20
X.XXX	±0.10
Angle	±3°
DIM	TOL

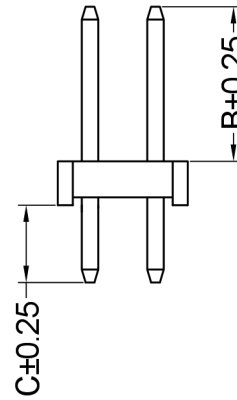
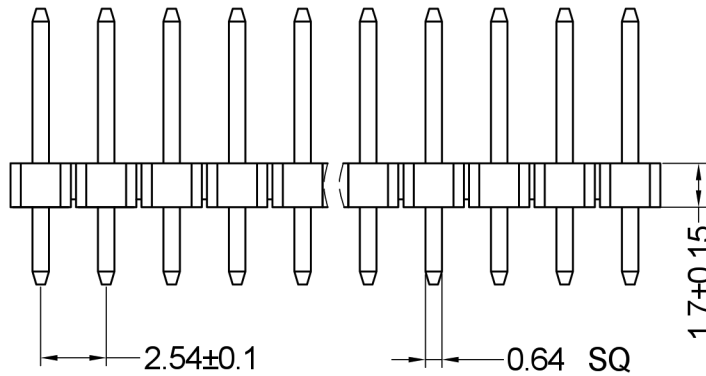
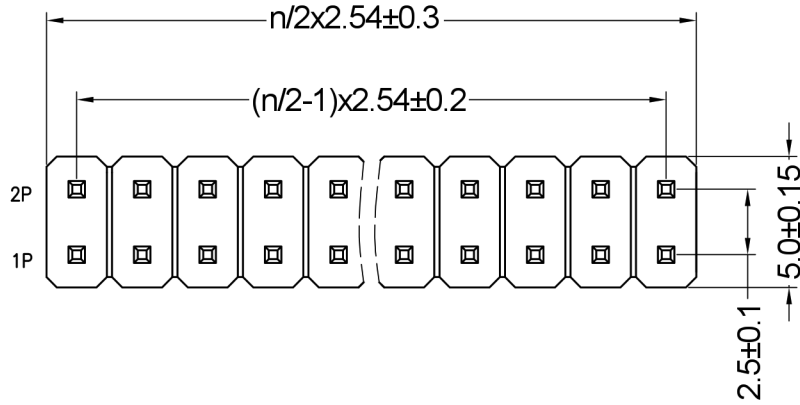


Serial Number 46-931			
Part Name Pin Header, 2.54mm Pitch, Straight, Single Row, 1.7mm Body			
Creation date 2019-01-09	Drawn AL	Approved PS	Approval date 2019-01-09
REACH (EG) Nr. 1907/2006 RoHS 2011/65/EU compliant		Scale %	Sheet

On release of the data sheet, previous releases are no longer valid. Dimensions and tolerances are subject to change.

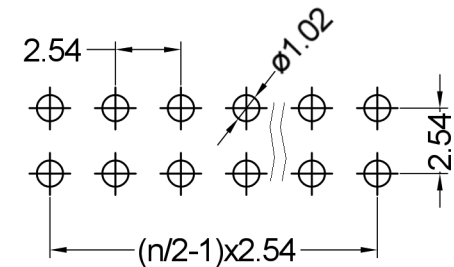
Copying of this document, and giving it to others and the use or communication of the contents thereof, are forbidden without express authority. Offenders are liable to the registration of a utility model or design.

On release of the data sheet, previous releases are no longer valid. Dimensions are subject to change.



Insulator	Thermoplastic, rated UL94 V-0
Contact Material	Copper alloy
Contact Surface	Au over Ni
Contact Resistance	20 mΩ max.
Insulation Resistance	1000 MΩ min.
Test Voltage	1000 V AC/DC
Current Rating	3 A
Temperature Range	-40 °C ... +105 °C
Processing Temperature	230 °C for 30-60 seconds (260 °C for 5 seconds)

Recommended P.C.B Layout (Top Side)
(PCB BOARD TOLERANCE ±0.05)



Series	Dimensions *	Contacts *	Plating
46-932	11	004	00
10	A=10,20 B=6,00 C=2,50mm	004-080 Zweireihig	00 Vergoldet
11	A=10,80 B=6,60 C=2,50mm	Double row	Gold plated
12	A=11,30 B=6,30 C=3,30mm		
13	A=12,60 B=7,60 C=3,30mm		
14	A=13,90 B=8,90 C=3,30mm		
15	A=14,70 B=9,70 C=3,30mm		
16	A=17,70 B=12,70 C=3,30mm		
17	A=19,80 B=14,80 C=3,30mm		
18	A=21,60 B=16,60 C=3,30mm		
19	A=22,80 B=17,80 C=3,30mm		
20	A=24,90 B=19,90 C=3,30mm		

X.X	±0.30
X.XX	±0.20
X.XXX	±0.10
Angle	±3°
DIM	TOL



Serial Number 46-932			
Part Name Pin Header, 2.54mm Pitch, Straight, Double Row, 1.7mm Body			
Creation date 2019-01-09	Drawn AL	Approved PS	Approval date 2019-01-09
REACH (EG) Nr. 1907/2006 RoHS 2011/65/EU compliant		Scale %	Sheet

Copying of this document, and giving it to others and the use or communication of the contents thereof, are forbidden without express authority. Offenders are liable to the registration of a utility model or design.