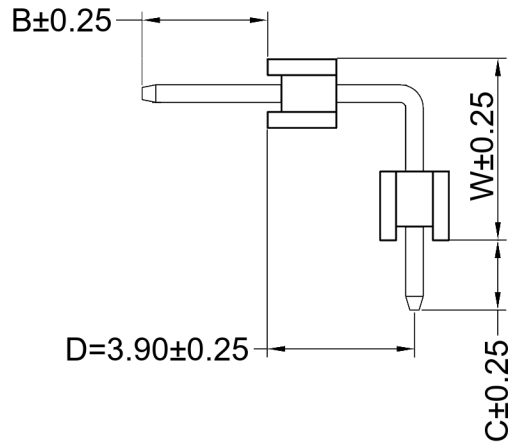
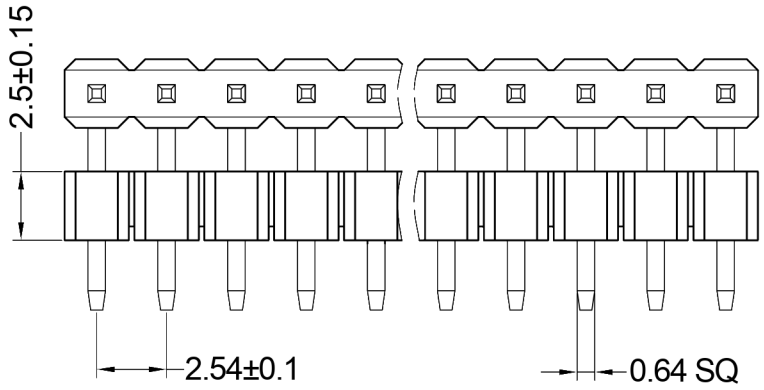
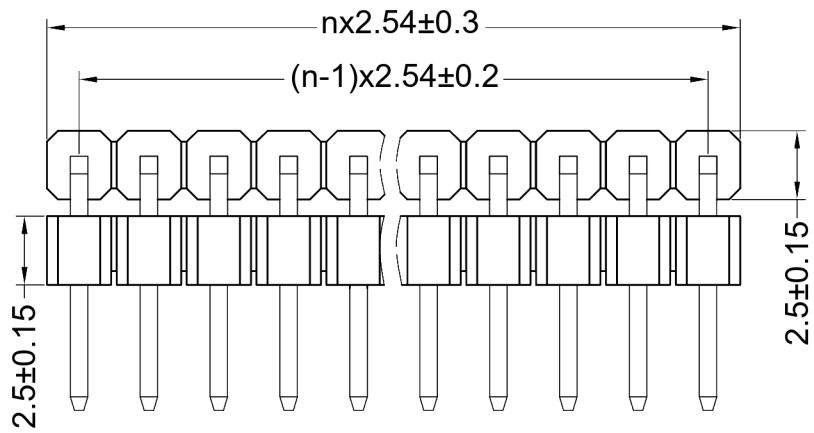
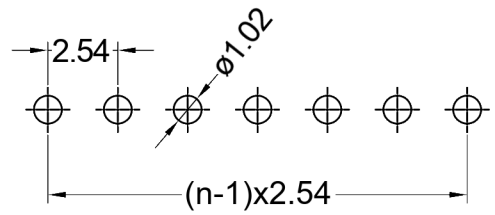


On release of the data sheet, previous releases are no longer valid. Dimensions and tolerances are subject to change.

Copying of this document, and giving it to others and the use or communication of the contents thereof, are forbidden without express authority. Offenders are liable to the registration of a utility model or design.



Recommended P.C.B Layout(Top Side)  
(PCB BOARD TOLERANCE±0.05)



Insulator	Thermoplastic, rated UL94 V-0
Contact Material	Copper alloy
Contact Surface	Au over Ni
Contact Resistance	20 mΩ max.
Insulation Resistance	1000 MΩ min.
Test Voltage	1000 V AC/DC
Current Rating	3.0 A
Temperature Range	-40 °C ... +105 °C
Processing Temperature	230 °C for 30-60 seconds (260 °C for 10 seconds)

**Series** **46-956** — **Dimensions\*** **12** — **Contacts\*** **016** — **Plating** **00**

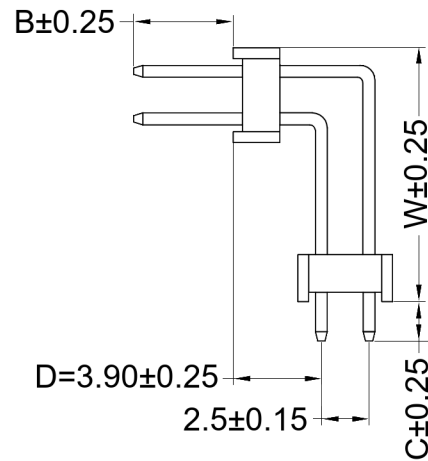
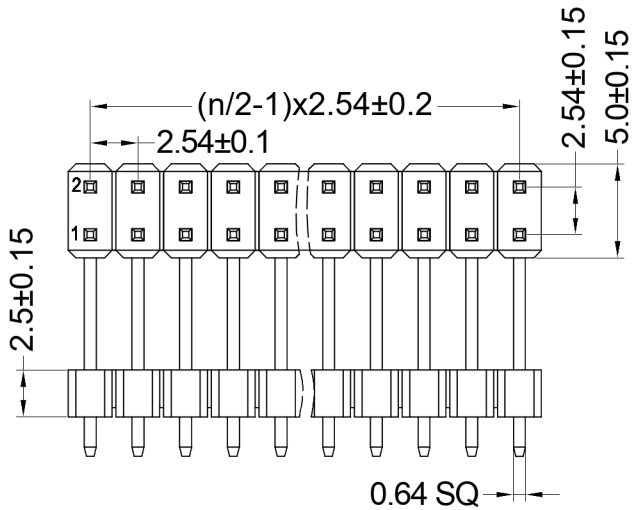
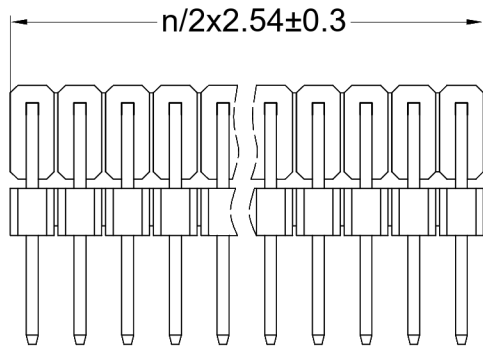
- 12** B=4.60 C=3.30 D=3.90 W=13.50mm
  - 13** B=4.80 C=3.30 D=3.90 W=16.80mm
  - 99** Customer-specific
- 001-020** Einreihig  
Single row
- 00** Vergoldet  
Gold plated

Weitere Stiftlängen auf Anfrage  
More pin length options on request

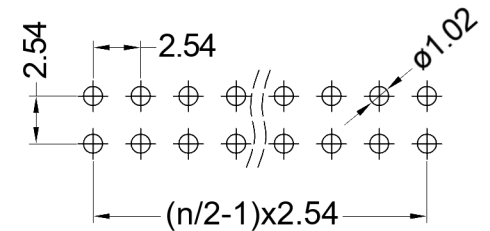
X.X	±0.30
X.XX	±0.20
X.XXX	±0.10
Angle	±3°
DIM	TOL



Serial Number <b>46-956</b>			
Part Name Dual Body Pin Header, 2.54mm Pitch, Right-Angled, Single Row			
Creation date 2022-02-23	Drawn AL	Approved PS	Approval date 2022-02-23
REACH (EG) Nr. 1907/2006 RoHS 2011/65/EU compliant		Scale %	Sheet



Recommended P.C.B Layout (Top Side)  
(PCB BOARD TOLERANCE ± 0.05)



Insulator	Thermoplastic, rated UL94 V-0
Contact Material	Copper alloy
Contact Surface	Au over Ni
Contact Resistance	20 mΩ max.
Insulation Resistance	1000 MΩ min.
Test Voltage	1000 V AC/DC
Current Rating	3.0 A
Temperature Range	-40 °C ... +105 °C
Processing Temperature	230 °C for 30-60 seconds (260 °C for 10 seconds)

Series	Dimensions *	Contacts *	Plating
<b>46-957</b>	<b>13</b>	<b>026</b>	<b>00</b>
	12 B=4.60 C=3.30 D=3.90 W=13.50mm	004-050 Zweireihig Double row	00 Vergoldet Gold plated
	13 B=4.80 C=3.30 D=3.90 W=16.80mm		
	99 Customer-specific		

Weitere Stiftlängen auf Anfrage  
More pin length options on request

X.X	±0.30
X.XX	±0.20
X.XXX	±0.10
Angle	±3°
DIM	TOL



Serial Number <b>46-957</b>			
Part Name Dual Body Pin Headers, 2.54mm Pitch, Right-Angled, Double Row			
Creation date 2022-02-23	Drawn AL	Approved PS	Approval date 2022-02-23
REACH (EG) Nr. 1907/2006 RoHS 2011/65/EU compliant		Scale %	Sheet