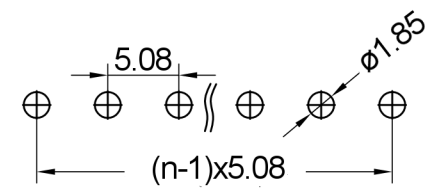


Insulator	Thermoplastic, rated UL94 V-0
Contact Material	Copper alloy
Contact Surface	Sn over Ni
Contact Resistance	20 mΩ max.
Insulation Resistance	1000 MΩ min.
Test Voltage	500 V AC/DC
Current Rating	7.0 A
Temperature Range	-40 °C ... +105 °C
Processing Temperature	230 °C for 30-60 seconds (260 °C for 10 seconds)

Recommended P.C.B Layout (Top Side)  
(PCB BOARD TOLERANCE ±0.05)



Series	Dimensions *	Contacts *	Type	Plating
<b>46-985</b>	<b>40</b>	<b>05</b>	<b>1</b>	<b>50</b>
	10 B=11,94 C=4,57mm 20 B=13,21 C=4,57mm 40 B=4,5 C=3,3mm	02-20	1 Gerade Straight	50 Verzinkt Tin plated

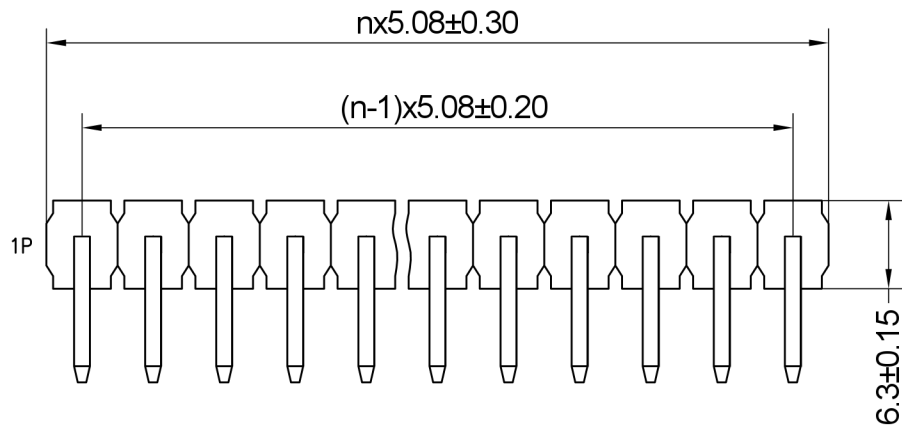
X.X	±0.30
X.XX	±0.20
X.XXX	±0.10
Angle	±3°
DIM	TOL



Serial Number <b>46-985</b>			
Part Name Pin Header, 5.08mm Pitch, Straight - Power Contacts			
Creation date 2019-01-24	Drawn AL	Approved PS	Approval date 2019-01-24
REACH (EG) Nr. 1907/2006 RoHS 2011/65/EU compliant		Scale %	Sheet 1/2

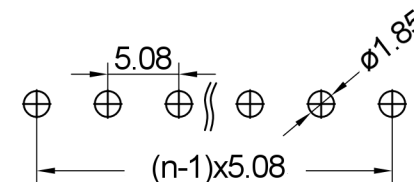
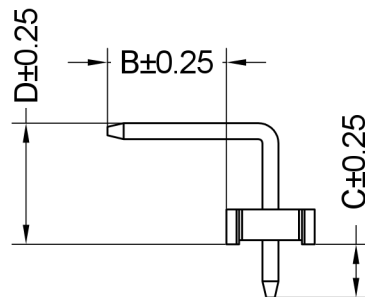
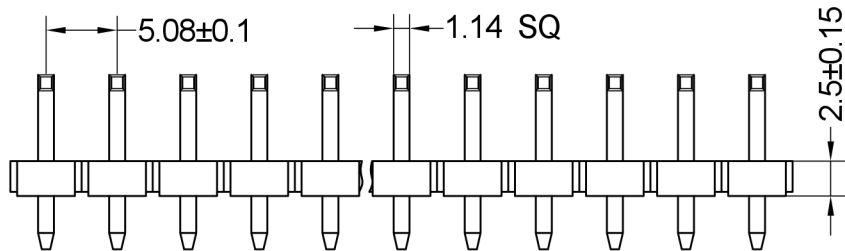
On release of the data sheet, previous releases are no longer valid. Dimensions are subject to change.

Copying of this document, and giving it to others and the use or communication of the contents thereof, are forbidden without express authority. Offenders are liable to the registration of a utility model or design.



Insulator	Thermoplastic, rated UL94 V-0
Contact Material	Copper alloy
Contact Surface	Sn over Ni
Contact Resistance	20 mΩ max.
Insulation Resistance	1000 MΩ min.
Test Voltage	500 V AC/DC
Current Rating	7.0 A
Temperature Range	-40 °C ... +105 °C
Processing Temperature	230 °C for 30-60 seconds (260 °C for 10 seconds)

Recommended P.C.B Layout (Top Side)  
(PCB BOARD TOLERANCE ±0.05)



<b>Series</b>	<b>Dimensions</b>	<b>Contacts *</b>	<b>Type</b>	<b>Plating</b>
<b>46-985</b>	<b>50</b> 50 B=4,5 C=3,3 D=4,5mm	<b>09</b> 02-20	<b>2</b> 2 Steckseitig gewinkelt Right-angled - mating side	<b>50</b> 50 Verzinkt Tin plated

X.X	±0.30
X.XX	±0.20
X.XXX	±0.10
Angle	±3°
DIM	TOL



Serial Number <b>46-985</b>			
Part Name Pin Header, 5.08mm Pitch, Right-angled - Power Contacts			
Creation date 2019-01-24	Drawn AL	Approved PS	Approval date 2019-01-24
REACH (EG) Nr. 1907/2006 RoHS 2011/65/EU compliant		Scale %	Sheet 2/2

On release of the data sheet, previous releases are no longer valid. Dimensions and tolerances are subject to change.

Copying of this document, and giving it to others and the use or communication of the contents thereof, are forbidden without express authority. Offenders are liable to the payment of damages and may be prosecuted in the event of the grant of a patent or the registration of a utility model or design.