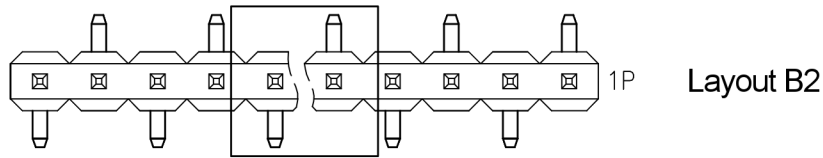
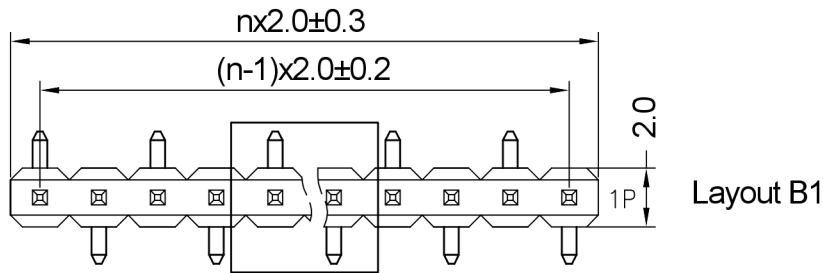


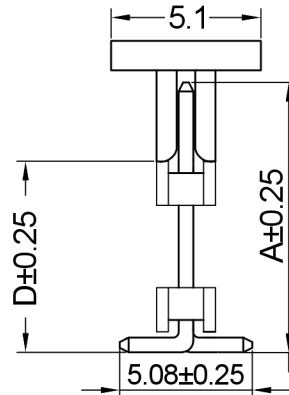
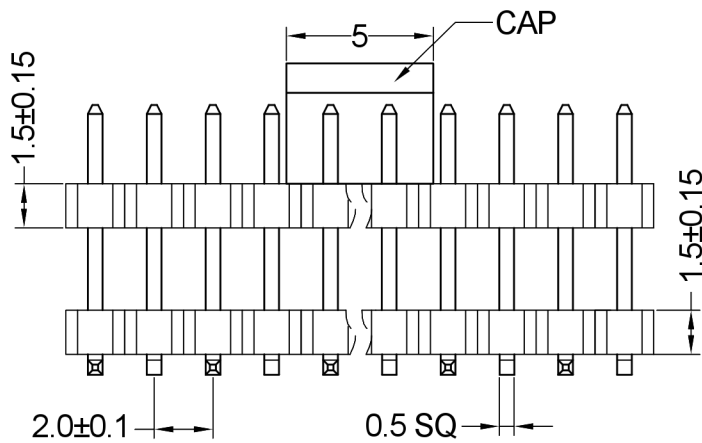
On release of the data sheet, previous releases are no longer valid. Dimensions and tolerances are subject to change.



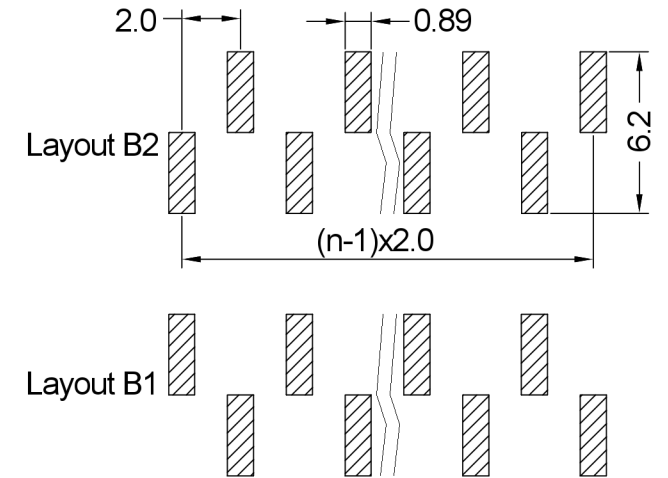
Layout B2



Layout B1



Recommended P.C.B Layout(Top Side)
(PCB BOARD TOLERANCE±0.05)



Series **46-7352** Contacts * **30** Rows * **11** Dimensions * **01** Dim.* **6,35** Plating **00** Locating Pegs **00** Packaging * **PPST**

03-30 Einreihig
Single row
Andere Polzahlen
auf Anfrage
Other pole numbers
on request

11 Layout B1
12 Layout B2

01 A=10,70mm
02 A= 7,85mm
03 A=11,86mm
04 A=12,37mm
05 A=15,37mm
06 A=17,35mm
07 A= 9,86mm
99 Kundenspez.
Customer-spec.

D [in mm]

00 Vergoldet
Gold plated

00 Ohne Pos.hilfen
W/o loc. pegs

ST In Stangen ohne Pick&Place-Pads / In tubes w/o Pick&Place-Pads
PPST In Stangen mit P&P-Pads / In tubes with P&P-Pads
PPTR Tape & Reel mit P&P-Pads / Tape & Reel with P&P-Pads

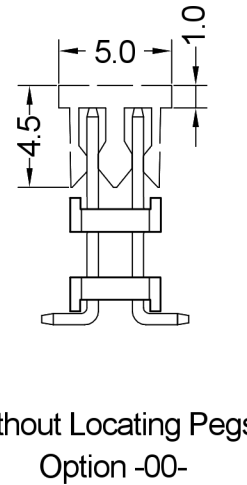
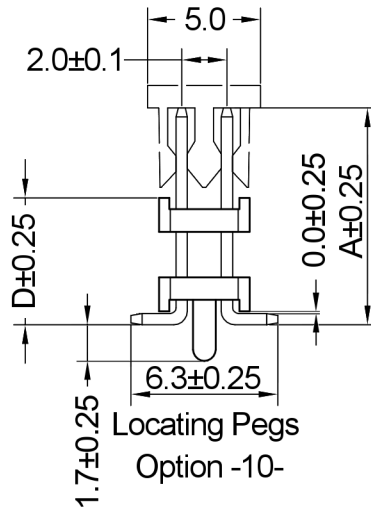
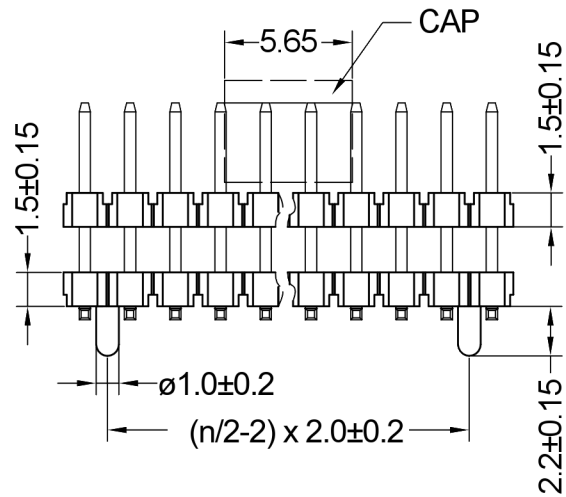
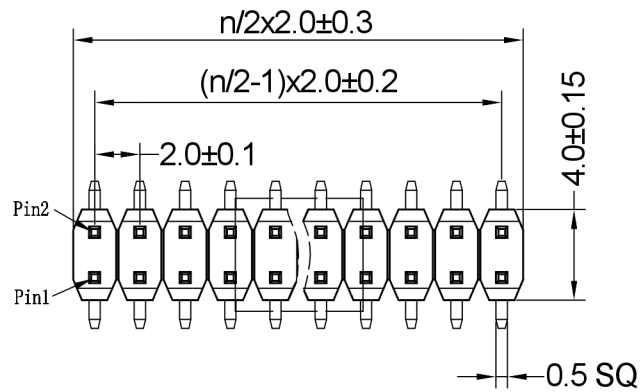
X.X	±0.30
X.XX	±0.20
X.XXX	±0.10
Angle	±3°
DIM	TOL



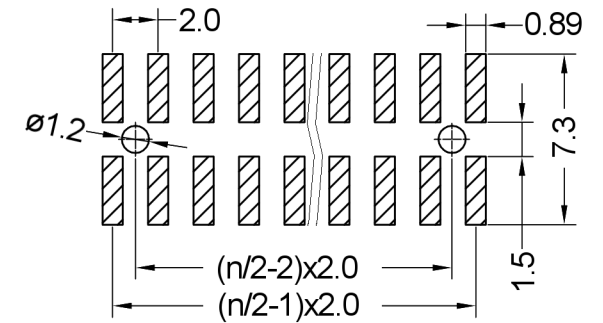
Serial Number 46-7352			
Part Name SMT Dual Body Pin Header, 2.00mm Pitch, Single Row			
Creation date 2019-02-05	Drawn AL	Approved PS	Approval date 2019-02-05
REACH (EG) Nr. 1907/2006 RoHS 2011/65/EU compliant		Scale %	Sheet 1/2

Copying of this document, and giving it to others and the use or communication of the contents thereof, are forbidden without express authority. Offenders are liable to the registration of a utility model or design.

On release of the data sheet, previous releases are no longer valid. Dimensions are subject to change.



Recommended P.C.B Layout (Top Side)
(PCB BOARD TOLERANCE ±0.05)



Insulator	Thermoplastic, rated UL94 V-0
Contact Material	Copper alloy
Contact Surface	Au over Ni
Contact Resistance	20 mΩ max.
Insulation Resistance	1000 MΩ min.
Test Voltage	500 V AC/DC
Current Rating	1.5 A
Temperature Range	-40 °C ... +105 °C
Processing Temperature	230 °C for 30-60 seconds (260 °C for 10 seconds)

Series **46-7352** Contacts * **60** Rows **20** Dimensions * **01** Dim.* **6,35** Plating **00** Locating Pegs * **10** Packaging * **PPST**

04-60 Zweireihig
Double row
Andere Polzahlen
auf Anfrage
Other pole numbers
on request

20 Zweireihig
Double row

01 A=10,70mm
02 A=7,85mm
03 A=11,86mm
04 A=12,37mm
05 A=15,37mm
06 A=17,35mm
07 A=9,86mm
99 Kundenspez.
Customer-spec.

D [in mm]

00 Vergoldet
Gold plated

00 Ohne Pos.hilfen
W/o loc. pegs
10 Mit Pos.hilfen
With loc. pegs

ST In Stangen ohne Pick&Place-Pads / In tubes w/o Pick&Place-Pads
PPST In Stangen mit P&P-Pads / In tubes with P&P-Pads
PPTR Tape & Reel mit P&P-Pads / Tape & Reel with P&P-Pads

X.X	±0.30
X.XX	±0.20
X.XXX	±0.10
Angle	±3°
DIM	TOL



Serial Number 46-7352			
Part Name SMT Dual Body Pin Header, 2.00mm Pitch, Double Row			
Creation date 2019-02-05	Drawn AL	Approved PS	Approval date 2024-03-26
REACH (EG) Nr. 1907/2006 RoHS 2011/65/EU compliant		Scale %	Sheet 2/2

Copying of this document, and giving it to others and the use or communication of the contents thereof, are forbidden without express authority. Offenders are liable to the full extent of the law. In the event of the grant of a patent or the registration of a utility model or design.