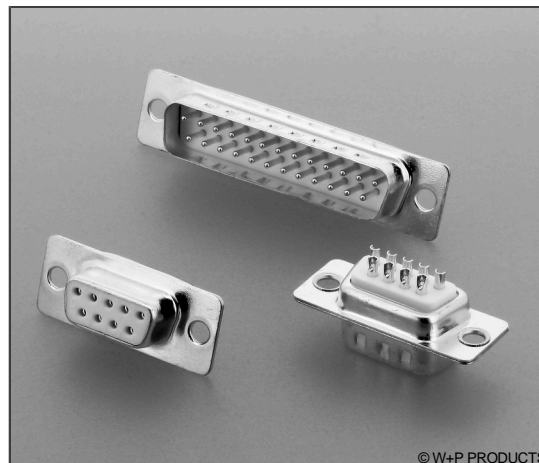


Technische Daten / Technical Data

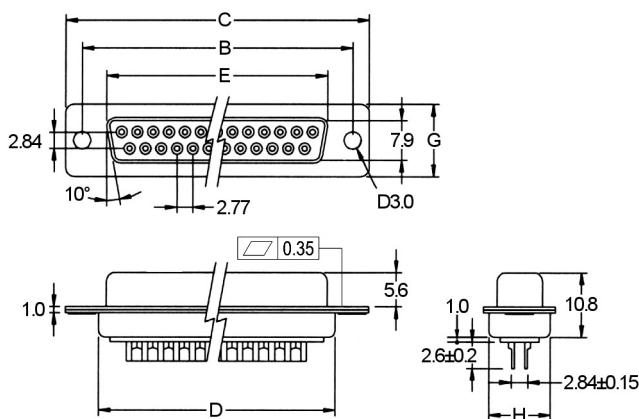
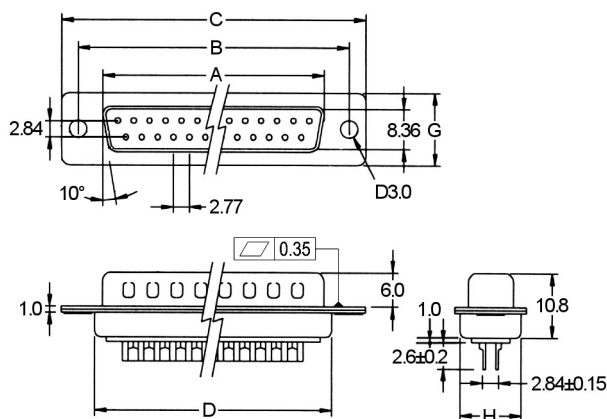
Gehäuse	Stahl vernickelt, verzinkt
Shell	Steel, nickel plated, tin plated
Isolierkörper	Thermoplast, nach UL94 V-0
Insulator	Thermoplastic, rated UL94 V-0
Kontaktmaterial	Kupferlegierung
Contact Material	Copper alloy
Kontaktoberfläche	Gold über Nickel
Contact Surface	Gold over nickel
Aderquerschnitt	AWG 20 max.
Applicable wire Gauge	AWG 20 max.
Durchgangswiderstand	< 20 mΩ
Contact Resistance	< 20 mΩ
Isolationswiderstand	> 1000 MΩ
Insulation Resistance	> 1000 MΩ
Spannungsfestigkeit	1 kV AC
Test Voltage	1 kV AC
Nennstrom	5 A
Current Rating	5 A
Temperaturbereich	-55 °C ... +125 °C
Temperature Range	-55 °C ... +125 °C



© W+P PRODUCTS

Stift / Male

Buchse / Female



n	A	B	C	D	E	G	H
09	16,92	24,99	30,81	19,28	16,33	12,55	10,72
15	25,25	33,62	39,14	27,51	24,66	12,55	10,72
25	38,96	47,04	53,04	41,30	38,38	12,55	10,72
37	55,42	63,50	69,32	57,71	54,84	12,55	10,72
50	52,86	61,11	66,90	55,30	52,34	15,20	13,40

Series	Contacts*	Terminal*	Quality*	Mounting*
100	09	1	1	3
100 Gedrehte Kontakte Screw machined contacts	09/15/25/37/50	1 Stift Male 2 Buchse Female	1 GK 1, min. 500 Steckzyklen QC 1, min. 500 cycles 2 GK 2, min. 200 Steckzyklen QC 2, min. 200 cycles 3 GK 3, min. 50 Steckzyklen QC 3, min. 50 cycles	0-6/B1/B2 Lt. Tech. Info. (BL/CL nicht lieferbar) See Tech. Info. (BL/CL not available)

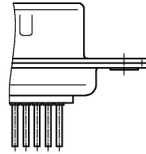
* Dies ist ein **Bestellbeispiel** -
bitte durch Ihre Spezifikationen ersetzen.
* This is an **order example** -
please replace by your specifications.

D-Sub Befestigungsoptionen

Mounting Options

Durchgangsloch / Through Hole

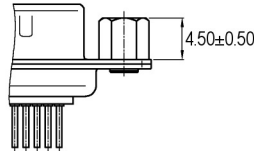
0 Durchgangsloch 3,05mm
3.05mm Through Hole



Gewindeniet vorn / Thread Rivet Front

B1 Gewindeniet UNC 4-40 (Anzugdrehmoment 0,4 Nm max.)
UNC 4-40 Thread Rivet (Tightening Torque 0.4 Nm max.)

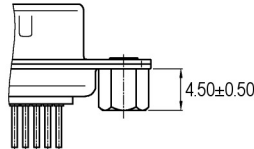
B2 Gewindeniet M3 (Anzugdrehmoment 0,3 Nm max.)
M3 Thread Rivet (Tightening Torque 0.3 Nm max.)



Gewindeniet hinten / Thread Rivet Back

1 Gewindeniet UNC 4-40 (Anzugdrehmoment 0,4 Nm max.)
UNC 4-40 Thread Rivet (Tightening Torque 0.4 Nm max.)

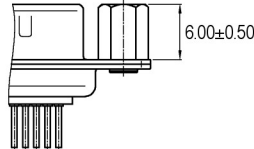
2 Gewindeniet M3 (Anzugdrehmoment 0,3 Nm max.)
M3 Thread Rivet (Tightening Torque 0.3 Nm max.)



Gewindebolzen vorn / Thread Bolt Front

3 Gewindebolzen UNC 4-40 (Anzugdrehmoment 0,4 Nm max.)
UNC 4-40 Thread Bolt (Tightening Torque 0.4 Nm max.)

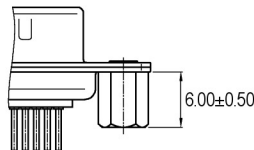
4 Gewindebolzen M3 (Anzugdrehmoment 0,3 Nm max.)
M3 Thread Bolt (Tightening Torque 0.3 Nm max.)



Gewindebolzen hinten / Thread Bolt Back

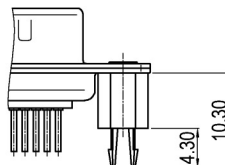
5 Gewindebolzen UNC 4-40 (Anzugdrehmoment 0,4 Nm max.)
UNC 4-40 Thread Bolt (Tightening Torque 0.4 Nm max.)

6 Gewindebolzen M3 (Anzugdrehmoment 0,3 Nm max.)
M3 Thread Bolt (Tightening Torque 0.3 Nm max.)



Board Locks

BL Board Lock mit UNC 4-40 Gewinde (Anzugdrehmoment 0,4 Nm max.)
Board Lock with UNC 4-40 Thread (Tightening Torque 0.4 Nm max.)



Combi-Locks

CL Combi-Lock mit UNC 4-40 Gewinde (Anzugdrehmoment 0,4 Nm max.)
Combi Lock with UNC 4-40 Thread (Tightening Torque 0.4 Nm max.)

