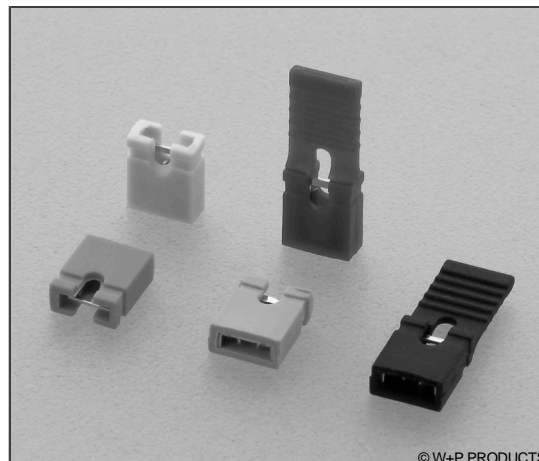


## Kurzschlussbrücken RM 2,54mm, für 0,635mm Vierkantstifte Mini Jumpers, 2.54mm Pitch, for 0.635mm Square Pins

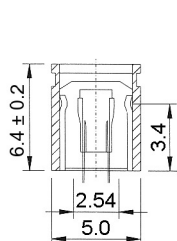
### Technische Daten / Technical Data

Isolierkörper <i>Insulator</i>	Thermoplast, nach UL94 V-0 <i>Thermoplastic, rated UL94 V-0</i>
Kontaktmaterial <i>Contact Material</i>	Kupferlegierung <i>Copper Alloy</i>
Kontaktoberfläche <i>Contact Surface</i>	Gold über Nickel <i>Gold over nickel</i>
Durchgangswiderstand <i>Contact Resistance</i>	< 30 mΩ
Isolationswiderstand <i>Insulation Resistance</i>	> 1000 MΩ
Spannungsfestigkeit <i>Test Voltage</i>	500 V AC
Nennstrom <i>Current Rating</i>	3 A
Temperaturbereich <i>Temperature Range</i>	-55 °C ... +85 °C

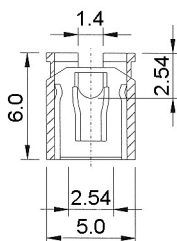
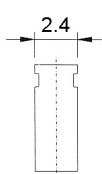


© W+P PRODUCTS

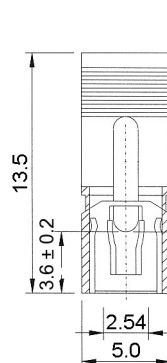
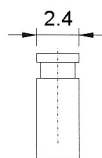
Einsetzbar für Vierkantstifte 0,635mm.  
Accept rectangular pins 0.635mm.



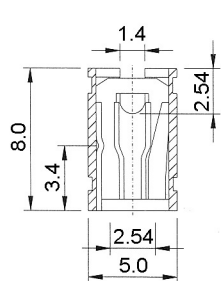
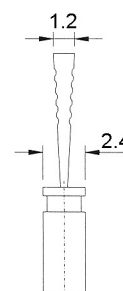
Type 101



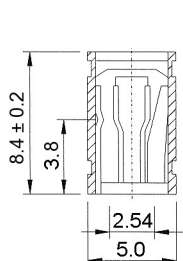
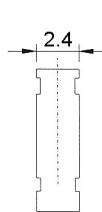
Type 201



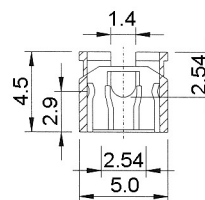
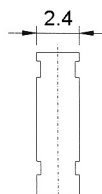
Type 301



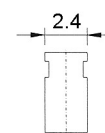
Type 401



Type 501



Type 601



### Series

**165**

### Type\*

**101**

- 101 Geschlossen  
*Closed*
- 201 Offen  
*Open*
- 301 Offen mit Lasche  
*Open with latch*
- 401 Offen  
*Open*
- 501 Geschlossen  
*Closed*
- 601 Offen  
*Open*

### Colour\*

**10**

- 10 Schwarz  
*Black*
- 20 Rot  
*Red*
- 30 Blau  
*Blue*
- 40 Grün  
*Green*
- 50 Gelb  
*Yellow*
- 60 Grau  
*Grey*

### Plating

**00**

- 00 Kontaktbereich vergoldet  
*Gold plated contact area*

Farboptionen für Serien 101 und 201.  
Colour options for series 101, 201 only.

\* Dies ist ein **Bestellbeispiel** -  
bitte durch Ihre Spezifikationen ersetzen.  
\* This is an **order example** -  
please replace by your specifications.