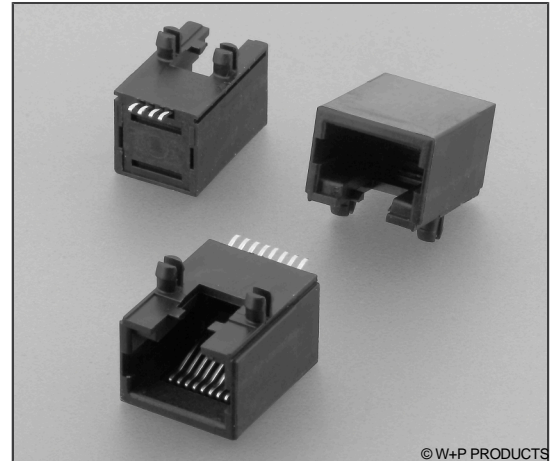
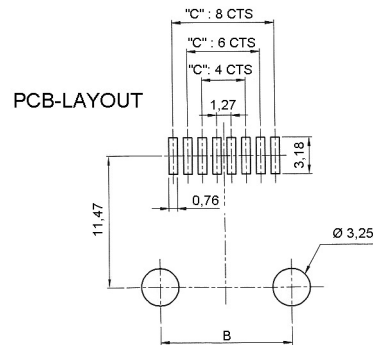
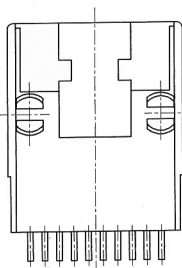
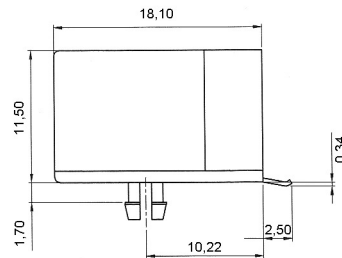
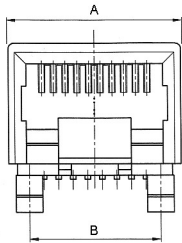


Technische Daten / Technical Data

Isolierkörper <i>Insulator</i>	Thermoplast, nach UL94 V-0 <i>Thermoplastic, rated UL94 V-0</i>
Kontaktmaterial <i>Contact Material</i>	Kupferlegierung <i>Copper alloy</i>
Kontaktoberfläche <i>Contact Surface</i>	Gold über Nickel (siehe Optionen unten) <i>Gold over nickel (see options below)</i>
Oberfläche Lötanschluss <i>Plating Solder Side</i>	Zinn über Nickel <i>Tin plated over nickel</i>
Durchgangswiderstand <i>Contact Resistance</i>	< 20 mΩ <i>< 20 mΩ</i>
Isolationswiderstand <i>Insulation Resistance</i>	> 500 MΩ <i>> 500 MΩ</i>
Spannungsfestigkeit <i>Test Voltage</i>	1 kV RMS <i>1 kV RMS</i>
Nennstrom <i>Current Rating</i>	1 A <i>1 A</i>
Temperaturbereich <i>Temperature Range</i>	-25 °C ... +85 °C <i>-25 °C ... +85 °C</i>
Verarbeitung <i>Processing</i>	250 °C für 20s <i>250 °C for 20s</i>



© W+P PRODUCTS



Series	Positions*	Contacts*	Plating*	Packaging*
3014	08	06	10	TR
Cat. 3	04 A=11,21 B=7,62 C=3,81mm ==> 06 A=12,96 B=10,16 C=6,35mm ==> 08 A=15,03 B=11,43 C=8,89mm ==>	04 04 06 06 08	10 0,15µm Gold 20 0,38µm Gold 30 0,76µm Gold 40 1,25µm Gold	00 TR

* Dies ist ein **Bestellbeispiel** - bitte durch Ihre Spezifikationen ersetzen.
* This is an **order example** - please replace by your specifications.

Lieferformen / Packaging Options:
00 Schüttgut / Bulk goods
TR Tape & Reel (Option) / Tape & Reel (Option)