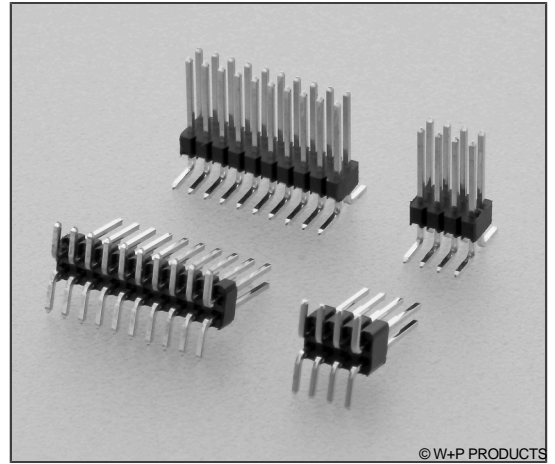


# 46-7075 Economy Version

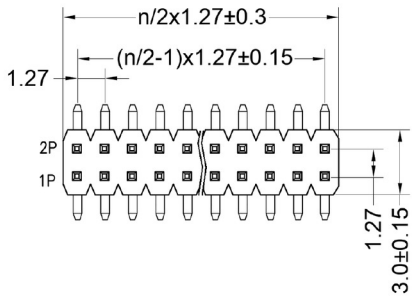
SMT-Stiftleisten RM 1,27mm, stehend, 2-reihig  
SMT Pin Headers, 1.27mm Pitch, Vertical, Double Row

## Technische Daten / Technical Data

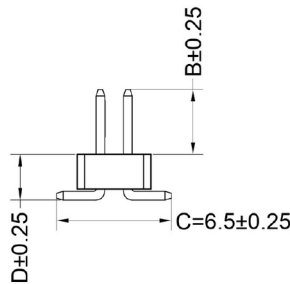
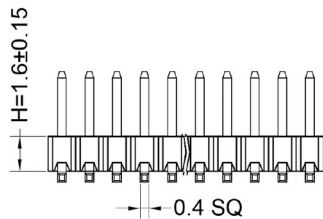
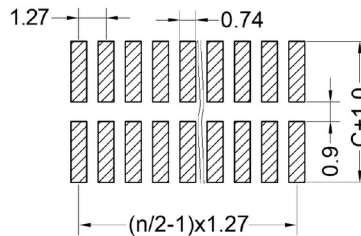
Isolierkörper	Thermoplast, nach UL94 V-0
Insulator	Thermoplastic, rated UL94 V-0
Kontaktmaterial	Kupferlegierung
Contact Material	Copper alloy
Kontaktoberfläche	Au über Ni
Contact Surface	Au over Ni
Durchgangswiderstand	< 20 mΩ
Contact Resistance	< 20 mΩ
Isolationswiderstand	> 1000 MΩ
Insulation Resistance	> 1000 MΩ
Spannungsfestigkeit	500 V AC/DC
Test Voltage	500 V AC/DC
Nennstrom	1 A
Current Rating	1 A
Temperaturbereich	-40 °C ~ +105 °C
Temperature Range	-40 °C ~ +105 °C
Verarbeitung	260 °C für 10 sec. / 230 °C für 30-60 sec.
Processing	260 °C for 10 sec. / 230 °C for 30-60 sec.



© W+P PRODUCTS



Recommended P.C.B Layout (Top Side)  
(PCB BOARD TOLERANCE ±0.05)



Series

**46-7075**

Contacts\*

**020**

004-050

Insulator

**16**

16 H=1.60mm

Dimensions\*

**10**

10 B=6.00 D=3.60mm  
20 B=6.00 D=3.30mm  
30 B=6.00 D=4.20mm  
99 Kundenspezifisch  
Customer-specific

Plating

**00**

00 Vergoldet  
Gold plated

Packaging\*

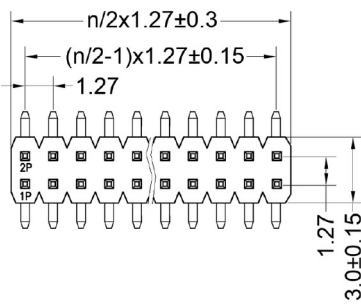
**ST**

ST  
PPST  
PPTR (Option)

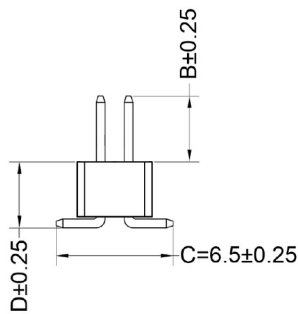
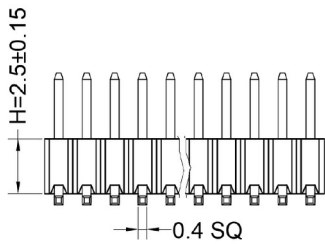
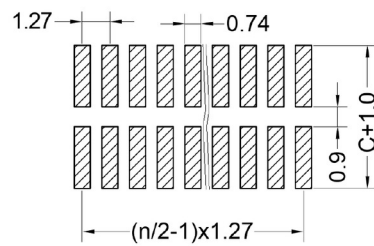
# 46-7075 Economy Version

SMT-Stiftleisten RM 1,27mm, stehend, 2-reihig

SMT Pin Headers, 1.27mm Pitch, Vertical, Double Row



Recommended P.C.B Layout (Top Side)  
(PCB BOARD TOLERANCE ± 0.05)



Series	Contacts*	Insulator	Dimensions*	Plating	Packing*
<b>46-7075</b>	<b>020</b> 004-050	<b>25</b> 25 H=2.50mm	<b>20</b> 10 B=6.00 D=3.60mm 20 B=6.00 D=3.30mm 30 B=6.00 D=4.20mm 99 Kundenspezifisch Customer-specific	<b>00</b> 00 Vergoldet Gold plated	<b>PPST</b> ST PPST PPTR (Option)

\* Dies ist ein **Bestellbeispiel** - bitte durch Ihre Spezifikationen ersetzen.  
\* This is an **order example** - please replace by your specifications.

**Lieferformen / Packaging Options:**  
**ST** In Stangen ohne Pick&Place-Pads / In tubes w/o Pick&Place-Pads  
**PPST** In Stangen mit P&P-Pads / In tubes with P&P-Pads  
**PPTR (Option)** Tape & Reel mit P&P-Pads / Tape & Reel with P&P-Pads

### Reflow-Lötempfehlung für kurze Lötzeiten

Die Bauteile sollten gemäß folgendem Temperatur-Profil in Anlehnung an die IPC/JEDEC J-STD-020C für bleifreies Löten im Reflow-Verfahren verarbeitet werden (Maximalwerte).

Profileigenschaft	Kennwert
Temperatur Minimum $T_{Smin}$	150 °C
Temperatur Maximum $T_{Smax}$	200 °C
Dauer $T_{Smin} - T_{Smax}$	60 – 180s
Temperatur Lötbereich $T_L$	untere Temperaturangabe [°C]
Verweildauer oberhalb $T_L$	laut Angabe im Datenblatt [sec]
Ramp-Up Rate $T_{Smax} - T_P$	max. 3 °C / s
Höchsttemperatur $T_P$	obere Temperaturangabe [°C]
Dauer Höchsttemperatur	laut Angabe im Datenblatt [sec]
Ramp-Down Rate $T_{Pmax} - T_{Smin}$	6 °C / s
Dauer 25 °C – Höchsttemperatur $T_P$	max. 8m

### Reflow Soldering Recommendation For Shorter Peak Times

Items should be soldered according to IPC/JEDEC J-STD-020C temperature profile for leadfree reflow soldering (maximum values).

Profile Feature	Key Values
Minimum Temperature $T_{Smin}$	150 °C
Maximum Temperatur $T_{Smax}$	200 °C
Duration $T_{Smin} - T_{Smax}$	60 – 180s
Soldering Range Temperature $T_L$	Lower Temperature [°C]
Duration above $T_L$	Acc. to datasheet [sec]
Ramp-Up Rate $T_{Smax} - T_P$	max. 3 °C / s
Peak Temperature $T_P$	Upper Temperature [°C]
Duration Peak Temperature	Acc. to datasheet [sec]
Ramp-Down Rate $T_{Pmax} - T_{Smin}$	6 °C / s
Duration 25°C - Peak Temp. $T_P$	max. 8min

