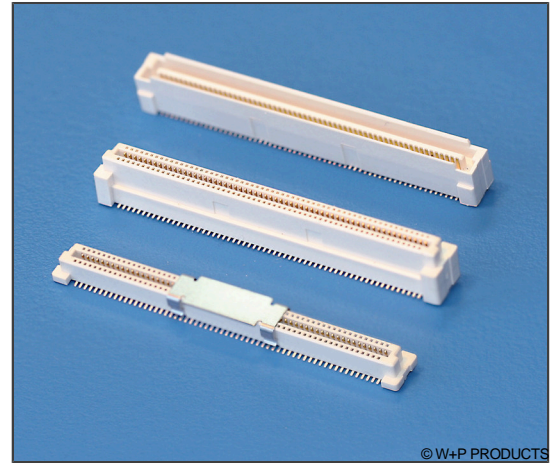
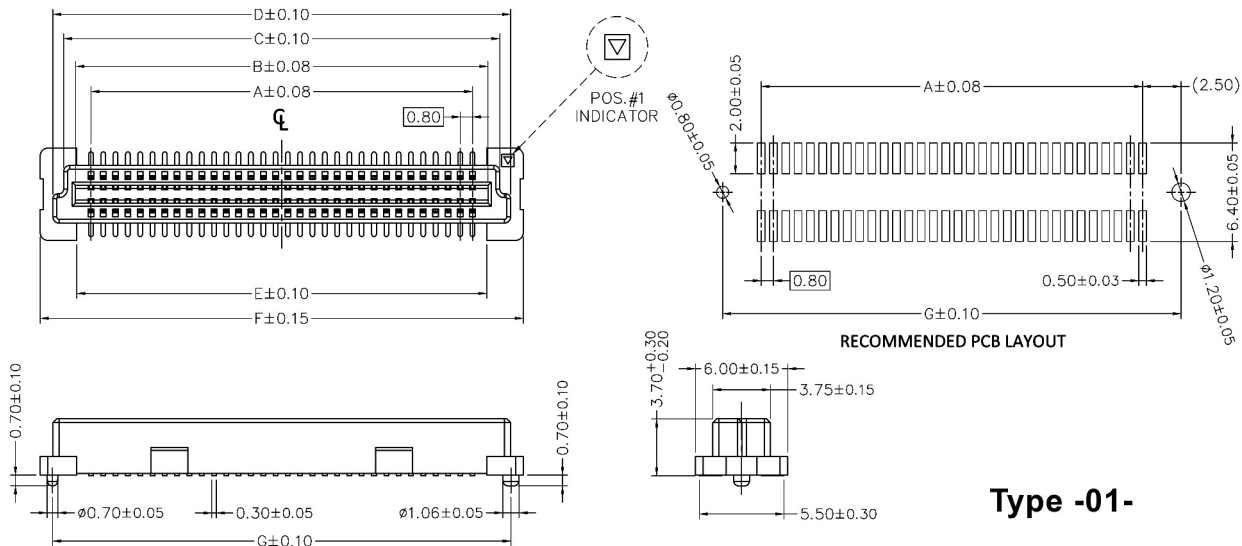


### Technische Daten / Technical Data

Isolierkörper <i>Insulator</i>	Thermoplast, nach UL94 V-0 <i>Thermoplastic, rated UL94 V-0</i>
Farbe <i>Colour</i>	Weiß <i>White</i>
Kontaktmaterial <i>Contact Material</i>	Kupferlegierung <i>Copper alloy</i>
Kontaktoberfläche <i>Contact Surface</i>	Sel. Au / Sn über Nickel <i>Sel. Au / Sn over Nickel</i>
Durchgangswiderstand <i>Contact Resistance</i>	< 30 mΩ <i>&lt; 30 mΩ</i>
Isolationswiderstand <i>Insulation Resistance</i>	> 1000 MΩ <i>&gt; 1000 MΩ</i>
Spannungsfestigkeit <i>Test Voltage</i>	500 V AC <i>500 V AC</i>
Nennspannung <i>Voltage Rating</i>	100 V AC <i>100 V AC</i>
Nennstrom <i>Current Rating</i>	0,8 A max. <i>0.8 A max.</i>
Temperaturbereich <i>Temperature Range</i>	-40 °C ... +125 °C <i>-40 °C ... +125 °C</i>
Verarbeitung <i>Processing</i>	260 °C für 10s max. <i>260 °C for 10s max.</i>



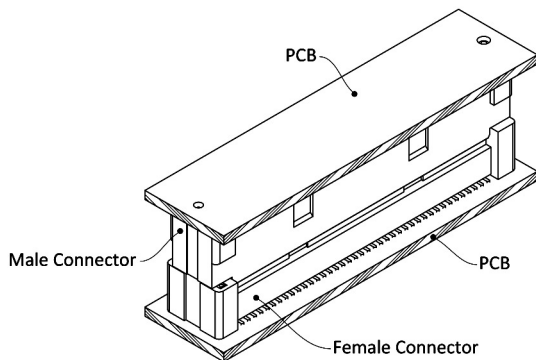
© W+P PRODUCTS



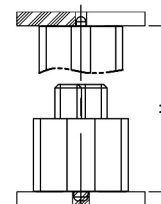
RECOMMENDED PCB LAYOUT

### Type -01-

CONTACT POSITIONS	DIMENSION						
	A	B	C	D	E	F	G
2 X 32	24.80	26.80	28.35	29.75	26.65	31.40	29.80
2 X 40	31.20	33.20	34.75	36.15	33.05	37.80	36.20



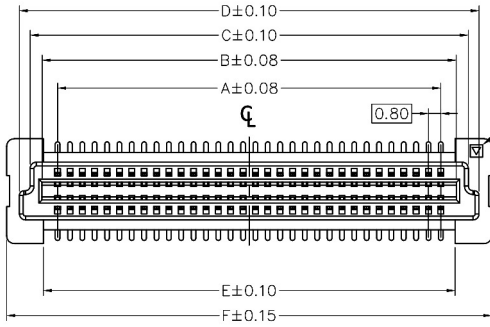
Connector Height(mm)		Mating Height(mm)
Male	Female	H
7.7	3.7	7.9
	7.7	11.90



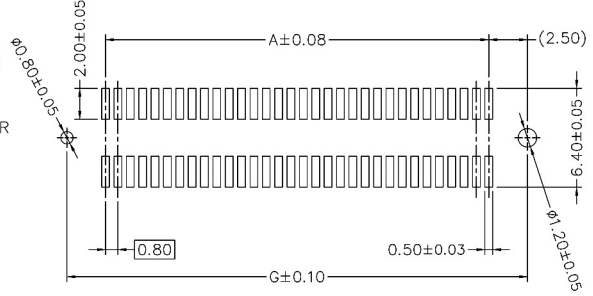
<b>Series</b> <b>5082</b>	<b>Contacts*</b> <b>80</b> 064/080 120 (nur Type 2 & 3) (Type 2 & 3 only)	<b>Type*</b> <b>02</b> 01 Female BH 3.7mm 02 Female BH 7.7mm 03 Male BH 7.7mm	<b>Plating</b> <b>60</b> 60 8µ" sel. Au / Sn	<b>Packing</b> <b>MPTR</b> MPTR Tape&Reel with Metal Pad
------------------------------	---	---	--	--

# 5082

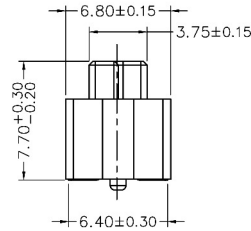
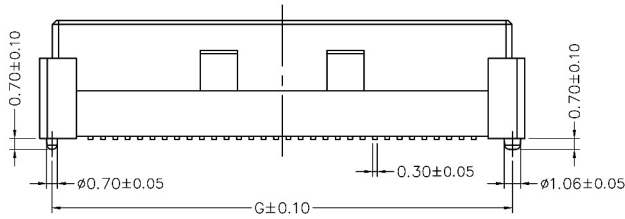
## SMT Board-to-Board Verbinder RM 0,80mm SMT Board-to-Board Connectors 0.80mm Pitch



POS.#1  
INDICATOR

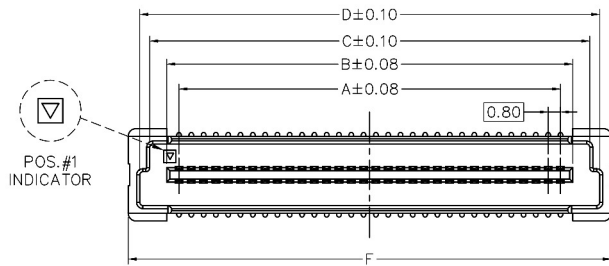


RECOMMENDED PCB LAYOUT

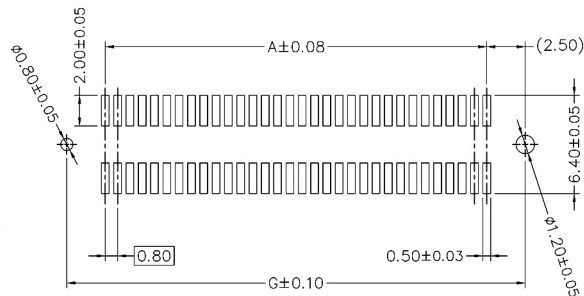


Type -02-

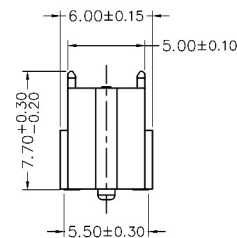
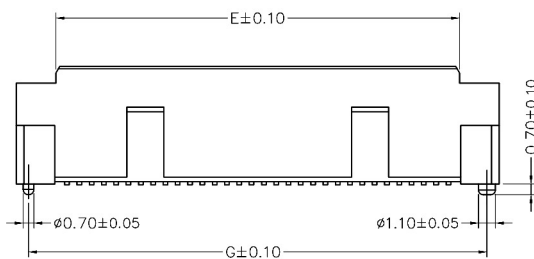
CONTACT POSITIONS	DIMENSION						
	A	B	C	D	E	F	G
2 X 32	24.80	26.80	28.35	29.75	26.65	31.40	29.80
2 X 40	31.20	33.20	34.75	36.15	33.05	37.80	36.20
2 X 60	47.20	49.20	50.75	52.15	49.05	53.80	52.20



POS.#1  
INDICATOR



RECOMMENDED PCB LAYOUT



Type -03-

NUMBER OF POSITIONS	DIMENSION						
	A	B	C	D	E	F	G
2 X 32	24.80	26.40	28.60	29.90	26.25	31.40	29.80
2 X 40	31.20	32.80	35.00	36.30	32.65	37.80	36.20
2 X 60	47.20	48.80	51.00	52.30	48.65	53.80	52.20

\* Dies ist ein **Bestellbeispiel** -  
bitte durch Ihre Spezifikationen ersetzen.  
\* This is an **order example** -  
please replace by your specifications.