

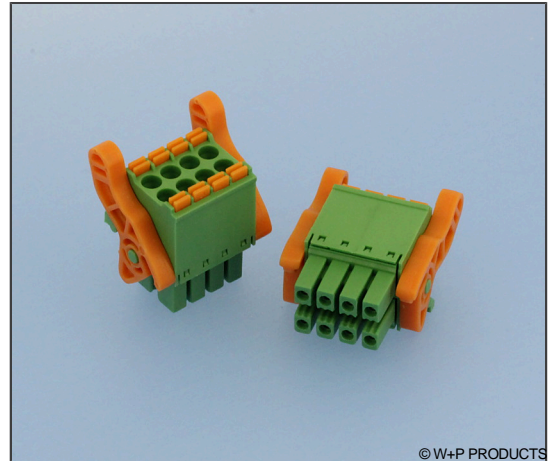
822-06-305TP

Buchsenstecker 2-reihig RM 3,50mm, mit Klemmfeder, mit Verriegelungshebel Female Plug Double Row 3.50mm Pitch, With Clamp Spring, With Latches

Technische Daten / Technical Data

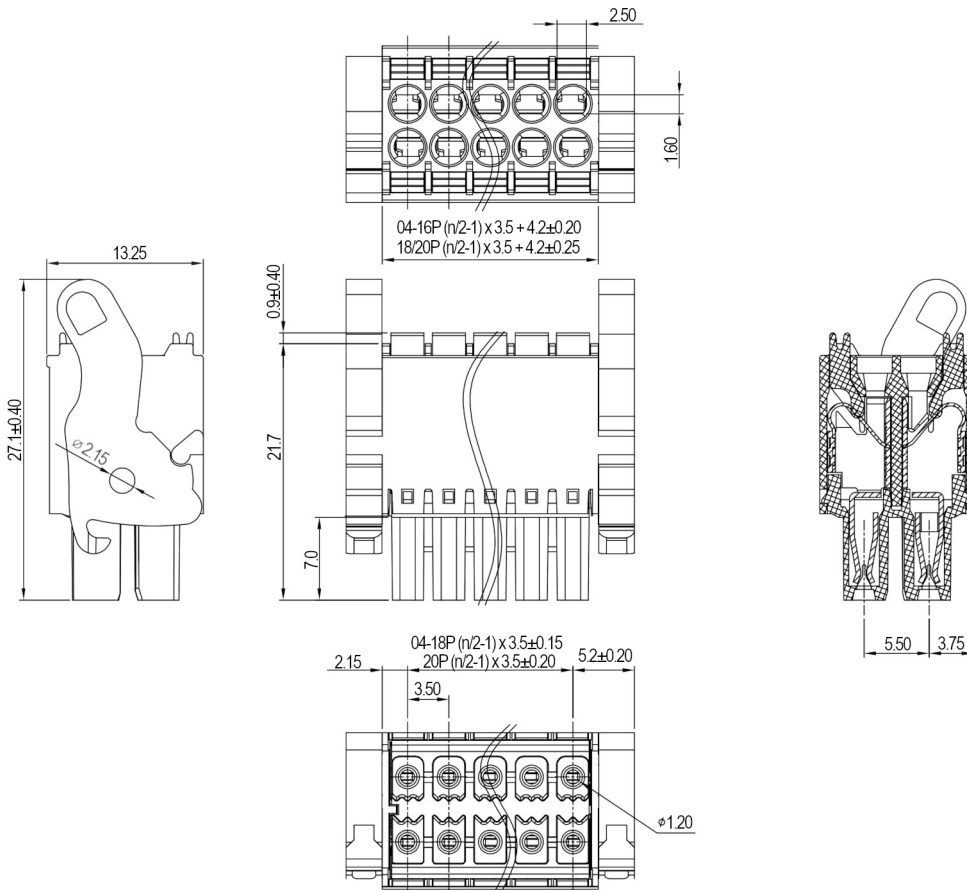
Isolierkörper <i>Insulator</i>	Thermoplast, nach UL94 V-0 <i>Thermoplastic, rated UL94 V-0</i>
Kontaktmaterial <i>Contact Material</i>	Phosphorbronze <i>Phosphor bronze</i>
Kontaktoberfläche <i>Contact Surface</i>	Verzinkt <i>Tin plated</i>
Aderquerschnitt <i>Applicable wire Gauge</i>	AWG 24 ~ 16 (Abisolierung 9-10mm) <i>AWG 24 ~ 16 (Wire strip length 9-10mm)</i>
Durchgangswiderstand <i>Contact Resistance</i>	20 mΩ max. <i>20 mΩ max.</i>
Isolationswiderstand <i>Insulation Resistance</i>	1000 MΩ min. bei 500V DC <i>1000 MΩ min. at 500V DC</i>
Spannungsfestigkeit <i>Test Voltage</i>	1600 V AC/Minute <i>1600 V AC/minute</i>
Nennspannung <i>Voltage Rating</i>	300 V <i>300 V</i>
Nennstrom <i>Current Rating</i>	8 A <i>8 A</i>
Temperaturbereich <i>Temperature Range</i>	-40 °C ... +115 °C <i>-40 °C ... +115 °C</i>

Drahtschutz / <i>Wire Guard</i>	Edelstahl / <i>Stainless Steel</i>
Farbe Hebel / <i>Colour Lever</i>	Orange / <i>Orange</i>
Farbe Rasthebel / <i>Colour Latch</i>	Orange / <i>Orange</i>



© W+P PRODUCTS

Passend zu Wannenstiftleiste Serie 822-06-305BH
(Mount.-Opt. 1).
Mates with Box Header Series 822-06-305BH
(Mount.-Opt. 1).



Series	Pitch	Contacts*	Design	Mounting Options	Colour
822-06-305TP	3.5	12	3	3	40
		04-20 Zweireihig Double Row	3 Gerader Kabeleingang Vertical Cable Entry	3 Mit Verriegelungshebel With Latches	40 Grün Green

* Dies ist ein **Bestellbeispiel** -
bitte durch Ihre Spezifikationen ersetzen.
* This is an **order example** -
please replace by your specifications.